



Converse County Shooting Range Improvement Project

Detailed Scope of Work

Converse County, Wyoming

1. General Project Description

The Converse County Shooting Range Improvement Project consists of demolition, earthwork, site improvements, concrete construction, fabrication and installation of range structures, safety improvements, target systems, electrical distribution, surveillance infrastructure, fencing, gates, and associated site improvements at the Converse County Public Shooting Range.

All work shall be performed in accordance with applicable federal, state, and local regulations and in compliance with Converse County requirements.

The Contractor shall furnish **all labor, supervision, materials, equipment, tools, transportation, permits, inspections, and incidentals necessary** to complete the project as described herein.

All work shall be performed in a **safe, professional, and workmanlike manner** consistent with industry standards.

2. Contractor Responsibilities

The Contractor shall:

- Obtain and pay for all required **permits, inspections, licenses, and approvals** required for construction.
- Maintain all required **contractor licensing within the State of Wyoming**.
- Provide **performance and payment bonds** if required by the County procurement process.
- Maintain required **general liability, workers compensation, and vehicle insurance coverage**.
- Coordinate with Converse County representatives for construction scheduling and range closures.
- Provide **shop drawings, product data, and material submittals** for review and approval prior to installation.
- Protect existing facilities and infrastructure during construction.
- Provide site cleanup and proper disposal of all demolition debris.
- Maintain site safety in accordance with **OSHA regulations**.

All work shall comply with applicable codes including but not limited to:

- International Building Code (IBC)
 - International Fire Code (IFC)
 - National Electrical Code (NEC)
 - Americans with Disabilities Act (ADA)
 - Wyoming Department of Environmental Quality requirements
-

3. Concrete Specifications

Unless otherwise noted, all cast-in-place concrete shall meet the following minimum requirements:

- **Minimum compressive strength: 4,500 PSI at 28 days**
 - Air entrainment suitable for freeze-thaw environments
 - Reinforcement: **#3 rebar minimum at 18" O.C. each way**, or approved fiberglass reinforcement equivalent
 - Base preparation: **minimum 4" compacted granular base course** over properly compacted subgrade
 - Concrete finish: **broom finish for exterior walking surfaces and firing line pads**
 - Expansion joints installed per industry standards
 - Concrete curing procedures per **ACI standards**
-

4. Lower Range Improvements

4.1 General

Construction of five (5) steel fabricated firing line structures including associated concrete pads, shooting benches, rifle racks, trash receptacles, and range safety features.

Improvements also include new entrance gate systems, electrical infrastructure, camera systems, and fencing repairs.

5. 100-Yard Firing Range

Demolition

- Contractor shall demolish and remove existing range structures, concrete, and associated materials within the work area.

- All materials shall be removed from site and disposed of in accordance with applicable regulations.

Firing Line Structures

- Construct two (2) steel fabricated firing line structures
 - Dimensions:
 - 20 ft x 60 ft footprint
 - 10 ft minimum clear height
 - Each structure shall be installed on a reinforced concrete pad.
 - Dimensions:
 - 125 ft x 20 ft x 4 in thick
 - Concrete: 4,500 PSI reinforced concrete
 - Finish: Broom finish surface over compacted base.
-

Railroad Tie Toe Board

Install railroad tie toe boards to prevent brass ejection onto range surface.

Specifications:

- 21" height
 - Ties stacked with staggered joints
 - Pinned together every 4 ft using **#4 reinforcing bar**
 - Bottom course anchored into concrete slab
-

Shooting Tables

- Install sixteen (16) marksmanship shooting tables with integrated seats.
- Approved product:

Pilot Rock Marksmanship Table Model MST/P-1R

Specifications:

- Precast concrete top and seat
- Powder coated steel frame
- Surface mounted or plate mounted

NOTE: Equivalent substitutions must be submitted for approval.

Park Benches

- Install four (4) park benches.
 - Dimensions: 72" L x 21.5" W x 35" H
 - Specifications:
 - 6 ft surface mounted bench
 - Expanded metal seat and back
 - Thermoplastic coating
 - Black powder coated 2-3/8" steel frame
-

Trash Receptacles

- Install four (4) **precast concrete trash receptacles**
 - Capacity: 30 gallon minimum
-

Rifle Racks

- Install two (2) outdoor rifle racks fabricated from corrosion resistant steel.
 - Capacity: Minimum **12 rifles per rack**
-

ADA Pathways

- Demolish existing walkways and construct new ADA compliant concrete pathways.
 - Specifications
 - Width: 4 ft minimum

- Thickness: 4 in
 - Concrete: **4,500 PSI**
 - Broom finish
 - Installed over compacted base
-
- ADA pathway shall be relocated to center of range and include target mounts aligned with existing target positions.
-

Range Berms

- Return berms to a **minimum height of 15 feet**. Work includes:
 - Earthmoving
 - Compaction
 - Grading for safe backstop geometry
-

6. 60-Yard Pistol Range

Scope mirrors improvements described in the 100-yard range with modifications as follows.

Structures

- Two (2) steel fabricated firing line structures: 20 ft x 60 ft x 10 ft
 - Installed on reinforced concrete pads: 125 ft x 20 ft x 4 in
-

- Concrete strength: **4,500 PSI**

Equipment Installation

Install:

- Two (2) shooting tables
 - Four (4) park benches
 - Four (4) trash receptacles
 - Two (2) rifle racks
-

ADA Walkways

- Construct new ADA compliant concrete walkways per specifications listed previously.
-

Berm Reconstruction

- Return berm height to **minimum 15 ft.**
-

7. Plinking / Rimfire Range

Demolition

- Remove existing structures and concrete surfaces.
-

Structure Construction

- Construct one (1) steel firing line structure:
 - 20 ft x 44 ft x 10 ft
 - Installed on concrete pad:
 - 45 ft x 20 ft x 4 in
 - Concrete strength: **4,500 PSI**
-

Equipment Installation

Install:

- One (1) park bench
 - One (1) trash receptacle
 - One (1) rifle rack capable of holding minimum 6 rifles
-

Berm Improvements

- Return berm height to **minimum 15 ft.**
-

8. Lower Range General Improvements

Entrance Gate System

- Install automated cantilever gate system.
 - Specifications:
 - 14 ft opening
 - 6 ft tall cantilever gate
 - 9 gauge chain link fabric
 - Three strand barbed wire top
 - Steel posts: 4" Schedule 40
 - Concrete embedded posts
 - Gate shall include:
 - Cellular gate operator
 - Keypad entry system
 - Photo capture capability
-

Dumpster Containment

- Construct reinforced concrete dumpster containment pad.
 - Dimensions: 10 ft x 12 ft
 - Walls: 7 ft high
 - Concrete strength: **4,500 PSI**

Electrical Infrastructure

- Relocate and extend electrical service approximately **900 feet** underground. Work includes:
 - Trenching
 - Conduit installation
 - Power cable installation
 - Separate conduit for data communications
 - All work shall comply with **National Electrical Code**.
-

Surveillance System

- Install security camera system as specified by Converse County IT Department.
 - Equipment (no substitutions):
 - Axis cameras and network equipment including:
 - Axis Q1808-LE bullet cameras
 - Axis M3126-LVE turret cameras
 - Ubiquiti Nanobeam wireless bridge
 - Starlink internet kit
 - System shall include **onsite digital storage per County specifications**.
-

Fencing

- Repair and replace damaged fence sections.
 - Install **Danger – Shooting Range** signage at intervals not exceeding **200 feet**.
-

Structure Removal

- Demolish and remove all unsafe or damaged structures within the range.
-

9. Upper Range Improvements

Construct four (4) steel fabricated firing line structures serving the 600-yard range.

Structures

- Dimensions: 16 ft x 24 ft x 10 ft
 - Concrete pad: 16 ft x 24 ft x 4 in Concrete strength: **4,500 PSI**
-

Lane Dividers

- Install railroad tie lane dividers.
 - Specifications:
 - 6 ft height
 - 16 ft length
 - Reinforced with #4 rebar pins at 24" O.C.
 - Bottom row anchored into concrete pad.
-

Shooting Tables

- Install twelve (12) marksmanship shooting tables.
 - Approved product: Pilot Rock MST/P-1R
-

Benches

- Install four (4) park benches as specified previously.
-

Trash Receptacles

- Install four (4) precast 30-gallon trash receptacles.
-

Rifle Racks

- Install four (4) rifle racks holding minimum 6 rifles each.
-

Steel Target Systems

- Install new gong targets.
- Specifications:
 - 25 steel gongs
 - ½" AR500 steel plates

- Mounting brackets fabricated from 3/8" AR400 steel
 - Railroad tie support structure
 - **All steel targets shall be painted for visibility.**
-

Berm Improvements

- Return berm height to **minimum 15 feet.**
-

Seeding

- Disturbed soil areas shall be reseeded with approved **native seed mix.**
-

Vault Restroom

- Install new precast vault restroom facility matching lower range design.
-

Gate System

- Install automated cantilever gate identical to lower range.
 - NOTE: Existing gate shall be salvaged and relocated to trap range.
-

10. Phase 2 – Trap Club Improvements

Concrete Repairs

Repair and replace damaged concrete near building entrances. Estimated concrete quantity:

- Approximately **11 cubic yards**
 - Concrete strength: **4,500 PSI**
-

Building Repairs

Perform repairs to existing building including:

- Fascia repair
 - Exterior weatherproofing
 - CMU sealing using elastomeric waterproofing coating
-

Vault Toilet Restoration

- Rehabilitate existing vault toilet facility including:
 - Structural repairs

- Pumping and inspection of vault
 - Installation of new doors with occupancy locks
-

Optional Lean-To Structure

Construct new lean-to structure attached to existing building.

- Approximate dimensions: 12 ft width running full length of building.
 - **Design-build approach.**
-

Security System

- Install camera system matching lower range equipment and configuration.
-

Gate Installation

- Relocate existing 600-yard gate to trap range.
 - Optional pricing for new automated cantilever gate.
-

Optional Trap Installation

- Provide optional bid for installation of two (2) new trap machines.
-

Insulation

- Install additional spray foam insulation in clubhouse roof assembly.
-

11. Final Site Restoration

Upon completion of construction the Contractor shall:

- Remove all construction debris
- Restore disturbed areas
- Regrade impacted surfaces
- Apply native seed mix where required.

The site shall be returned to **clean and operational condition.**



Converse County Shooting Range Improvement Project Scope

Complete improvements as specified in this document. It is important to note that this is a phased timeline project. **The lower range improvements must be completed by no later than July 7, 2026, to ensure access for 4-H State Shoot events. No construction will be allowed from July 10th – 13th, 2026, for 4-H State Shooting sports events.** The long range is included in Phase 1 but is not bound by the same timeline and can be completed by August 2026. Phase 2 of the project involves the Trap Club only.

1. LOWER RANGE IMPROVEMENTS: Installation of five (5) steel fabricated structures with new firing lines and equipped with benches, shooting tables, firearm racks, precast trash receptacles, and railroad tie toe boards, installation of a new gate with keypad operation at new proposed entrance.

A. 100-yard Firing Range:

- a. Demolition and removal of existing structures.
- b. Two (2) structures 20'x60'x10' for the 100-yard firing line installed on a 125'x20'x4" concrete pad, broom finished, installed on a compacted substrate, with #3 rebar or fiberglass equivalent.
- c. Installation of a 21" railroad tie toe kick forward of the firing line to prevent bass from landing on the range. Railroad ties will be stacked, offset joints, and pinned together every 4' and on ends using #4 rebar with bottom run pinned into concrete.
- d. Installation of sixteen (16) shooting tables with integrated seat. Precast top and seat with steel frame, arms, plate mounted or Pilot Rock Marksmanship Table Model MST/P-1R Powder coated. (equivalent substitutions to be reviewed upon submittal).
- e. Four (4) park benches, 6' Surface Mount, expanded metal backs and seats with thermoplastic coating 2-3/8" OD Black powder-coated steel frames, seat dimensions 72" l x 10" w x 18.25" h, Overall 72"L x 21.5"W x 35"H. (Equivalent substitutions to be reviewed upon submittal).
- f. Four (4) precast 30-gallon trash receptacles.
- g. Two (2) upright rifle racks fabricated for outdoor conditions. Must be able to hold a minimum of 12 rifles each.
- h. Demolition of existing concrete and replacement with new ADA concrete pathways. ADA pathways to be relocated to center of range. Concrete will be 4"x 4"w, broom finished, installed on a compacted substrate, with #3 rebar or fiberglass equivalent. Must include target mounts for existing target locations.
- i. Return Berm heights to a minimum of 15'.

B. 60-yard Firing Range & Pistol Range:

- a. Demolition and removal of existing structures.
- b. Two (2) structures 20'x60'x10' for the 60-yard pistol firing line installed on a 125'x20'x4" concrete pad, broom finished, installed on a compacted substrate, with #3 rebar or fiberglass equivalent.
- c. Installation of two (2) shooting tables with integrated seat; precast top and seat with steel frame, arms, plate mounted or Pilot Rock Marksmanship Table Model MST/P-1R Powder coated (Equivalent substitutions to be reviewed upon submittal).
- d. Four (4) park benches, 6' Surface Mount, expanded metal backs and seats with thermoplastic coating 2-3/8" OD Black powder-coated steel frames; seat dimensions 72" l x 10" w x 18.25" h, overall 72"L x 21.5"W x 35"H (Equivalent substitutions to be reviewed upon submittal).
- e. Four (4) precast 30-gallon trash receptacles.
- f. Two (2) upright rifle racks fabricated for outdoor conditions; must be able to hold a minimum of 12 rifles each.
- g. Demolition of existing concrete and replacement with new ADA concrete pathways; ensure ADA pathways are relocated to center of range. Concrete will be 4"x 4"w, broom finished, installed on a compacted substrate, with #3 rebar or fiberglass equivalent. Must include target mounts for existing target locations.
- h. Return Berm heights to a minimum of 15'.

C. Plinking/Rimfire Range

- a. Demolition and removal of existing structures.
- b. Demolition and removal of existing concrete.
- c. Construction of one (1) structure 20'x44'x10' for the 100-yard firing line installed on a 45'x20'x4" concrete pad, broom finished, installed on a compacted substrate, with #3 rebar or fiberglass equivalent.
- d. One (1) park bench, 6' surface mount, expanded metal backs and seats with thermoplastic coating 2-3/8" OD black powder-coated steel frames, seat dimensions 72" l x 10" w x 18.25" h, Overall 72"L x 21.5"W x 35"H (Equivalent substitutions to be reviewed upon submittal).
- e. One (1) pre-cast 30-gallon trash receptacle.
- f. One (1) upright rifle racks fabricated for outdoor conditions; must be able to hold a minimum of 6 rifles.
- g. Return Berm heights to a minimum of 15'.

D. Lower Range General Improvements

- a. Demolish and remove all existing structures.
- b. At new proposed entrance, install new Cantilever Gates: 14FT Opening, 6' tall Cantilever Gate, w/ 3 strand barbed wire, 9 ga chain link fabric, w/ (3) 4" SS 40 12ft posts/caps, w/ four 4" nylon rollers w/covers, and gate nesting latch; operator(s) mounted on steel plate attached two - 4" SS40 posts; Cantilever wind brace welded to new cantilever gates; post embedded in concrete; and cell gate operator with keypad and photo capture.
- c. Concrete containment for dumpster: 10'x12'x7'.
- d. Relocate power to new entrance and location for new pole-barn style structure near existing concrete vault restroom; approximately 900' trenched inground with cable and conduit; additional conduit to be installed for data for cameras.
 - i. Security surveillance system per design; no substitutions for equipment.
 - ii. On Pole No. 1: Install two (2) - Axis Q1808-LE Bullet Cameras; Install one (1) - Axis M3126-LVE Turret Camera Install Cat 6 from Pole No. 1 to Pole No. 2.
 - iii. On Pole No. 2: Install two (2) - Axis Q1808-LE Bullet Cameras; Install one (1) - Starlink Standard Internet Kit; Install one (1) - Install Single Mode Fiber Optic from Pole No. 2 to Pole No. 3 - Underground raceway.
 - iv. On Pole No. 3: Install one (1) - Axis Q1808-LE 150 mm Bullet Camera * ; Install one (1) - Axis M3126-LVE Turret camera; install one (1)- Ubiquiti Nanobeam to wirelessly connect to Pole No. 4.
 - v. Onsite storage as specified by the Converse County Technical Services Department.
- e. Repair and replace all damaged fence lines and install "Danger - Shooting Range" signs a minimum of every 200'.
- f. Option for Phase 2: Construction of one (1) 24' x 30' pole barn structure with concrete floor, insulated walls and ceiling, interior OSB wall finish, exterior steel siding and roofing with overhangs, four (4) windows and two (2) service doors, six (6) electrical outlets and four (4) overhead lighting fixtures.

2. UPPER RANGE IMPROVEMENTS: Installation of four (4) steel fabricated structures with new firing lines equipped with benches, shooting tables, firearm racks, precast trash receptacles, railroad tie dividers, and railroad tie toe boards. New gong targets with mountings; build 5'-tall berms around targets; new gate with keypad operation.

- a. Demolition and removal of existing structures and targets.
- b. Rebuild existing berms to 5' high berms.
- c. Construction of four (4) structures, each 16'x24'x10' for the 600-yard firing line, installed on four (4) 16'x24'x4" concrete broom finished pads, installed on a compacted substrate with #3 rebar or fiberglass equivalent.
- d. Install lane dividers made from railroad ties pinned together using #4 rebar, 2' on center, staggering pins and joints with bottom row pinned into the concrete. Each dividing wall will be 6' high x 16' long (8' inside the structure starting on the firing line, 8' in front of structure keeping lane integrity).
- e. Installation of twelve (12) shooting tables with integrated seat: Precast top and seat with steel frame, arms, plate mounted or Pilot Rock Marksmanship Table Model MST/P-1R powder coated (equivalent substitutions to be reviewed upon submittal).
- f. Four (4) park benches, 6' surface mount, expanded metal backs and seats with thermoplastic coating 2-3/8" OD black powder-coated steel frames; seat dimensions 72" long x 10" wide x 18.25" high, overall 72"L x 21.5"W x 35"H (equivalent substitutions to be reviewed upon submittal).
- g. Four (4) precast 30-gallon trash receptacles.
- h. Four (4) upright rifle racks fabricated for outdoor conditions; must be able to hold a minimum of six (6) rifles each.
- i. Installation of new target gongs: New railroad tie uprights and cross beam mounted together with brackets per drawing; new painted 25 gongs made from 1/2" formable 500 and 50 Brackets made from 3/8" formable 400.
- j. Reseed areas where soil has been disturbed by dirt work with native seed mix as determined by the County.
- k. Return berm heights to a minimum of 15'.
- l. Concrete containment for dumpster: 10'x12'x7'.
- m. New Precast vault restroom to match lower range: Install new Cantilever gates: 14ft opening, 6' tall Cantilever gate w/3-strand barbed wire, 9 ga chain link fabric w/three 4" SS 40 12ft posts/caps, w/ four 4" nylon rollers w/ covers, and gate nesting latch. Operator(s) mounted on steel plate attached to two 4" SS40 posts; Cantilever wind brace welded to new Cantilever gates with post embedded in concrete; cell gate operator with keypad and photo capture. NOTE: Save existing gate for installation at trap range.
- n. Install on Pole No. 4: two (2) - Axis Q1808-LE 150 mm bullet camera, one (1) - Axis M3126-LVE Turret camera; install one (1) - Ubiquiti Nanobeam to wirelessly connect

to Pole No. 3. NOTE: No substitutions allowed.

- o. Repair and replace damaged fencing, and place “Danger - Shooting Range” signs a minimum of every 200 feet.

2. Phase 2: Trap Club

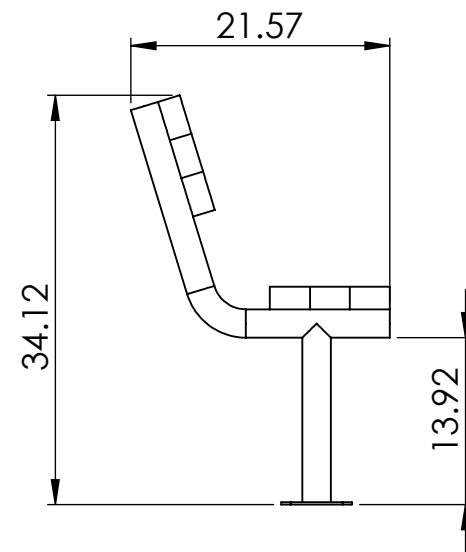
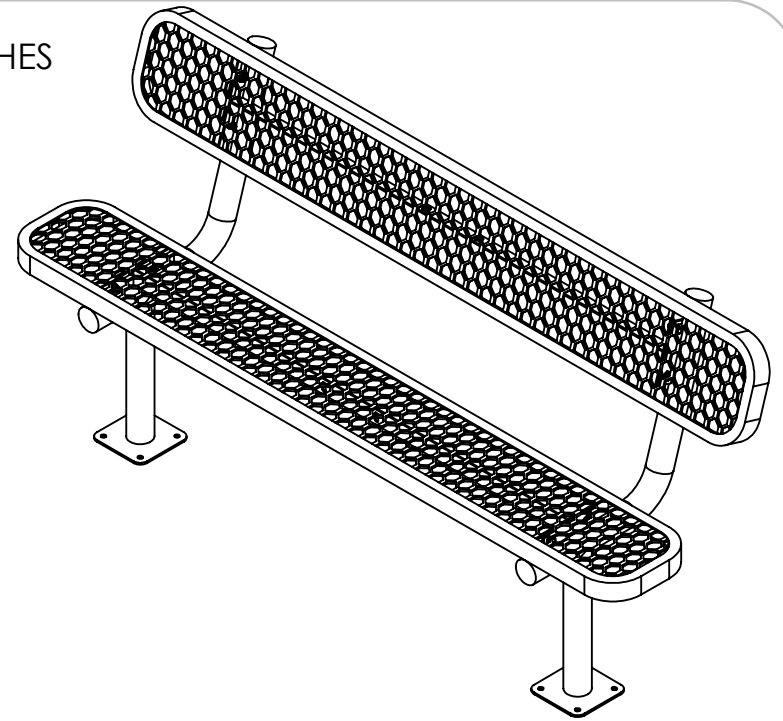
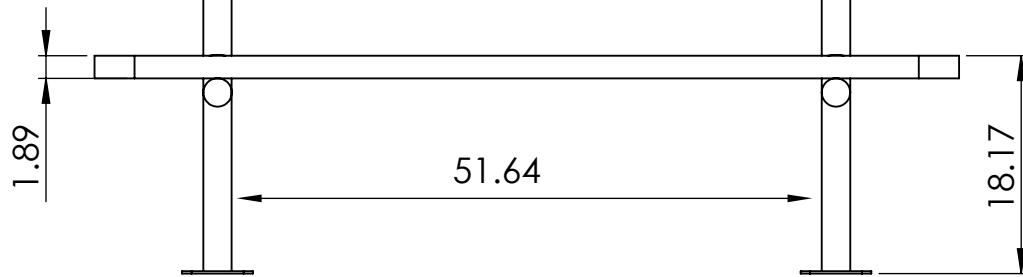
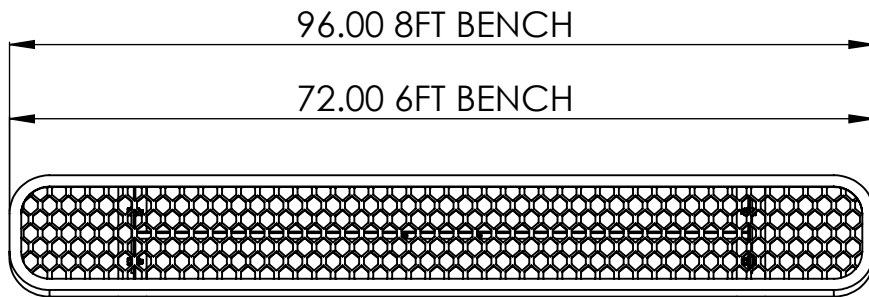
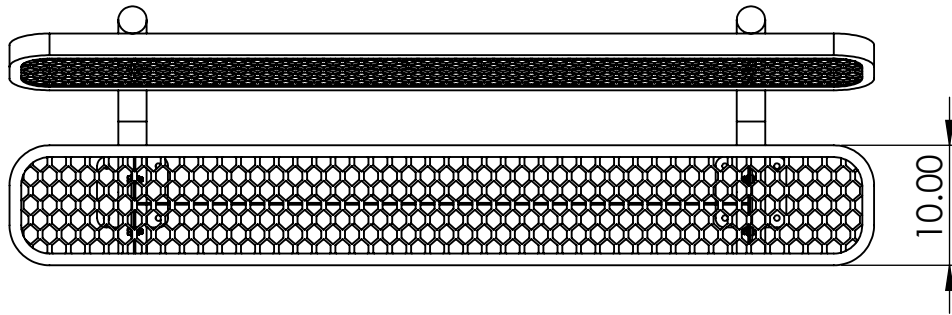
- a. Concrete and ADA repairs: Repair concrete in front of building and at the side door to return slope, estimated 11 yards of concrete.
- b. Repair existing building: Repair damaged fascia and exterior weathering improvements.; seal CMU with an elastomeric waterproofing product.
- c. Revitalize vault toilet/outhouse: Repair damage to structure; pump out and inspect vault to make sure it is viable to return to service; install new doors with occupancy locks.
 - i. Option: Design-build lean-to/additional structure the length of existing and building 12’ width.
- d. Camera/security system to cover entrance, and building built with the same equipment and design as lower ranges.
- e. Install gate from 600-yard range at trap range.
 - i. Option quote for: Install new Cantilever gates: 14 foot opening, 6ft tall Cantilever gate, w/3-strand barbed wire, 9 ga chain link fabric, w/ (3) 4" SS 40 12ft Posts/caps, w/four 4" nylon rollers w/covers, and gate nesting latch. Operator(s) mounted on steel plate attached two - 4" SS40 posts. Cantilever Wind Brace welded to new cantilever gates; post embedded in concrete; and cell gate operator with keypad and photo capture.
- f. Option: Installation of two (2) new traps.
- g. Provide additional spray insulation in the roof of club house.

**CONVERSE COUNTY
SHOOTING RANGE
IMPROVEMENTS PROJECT**

**BENCH
SPECIFICATIONS**

SPECIFICATIONS

ALL DIMENSIONS ARE SHOWN IN INCHES



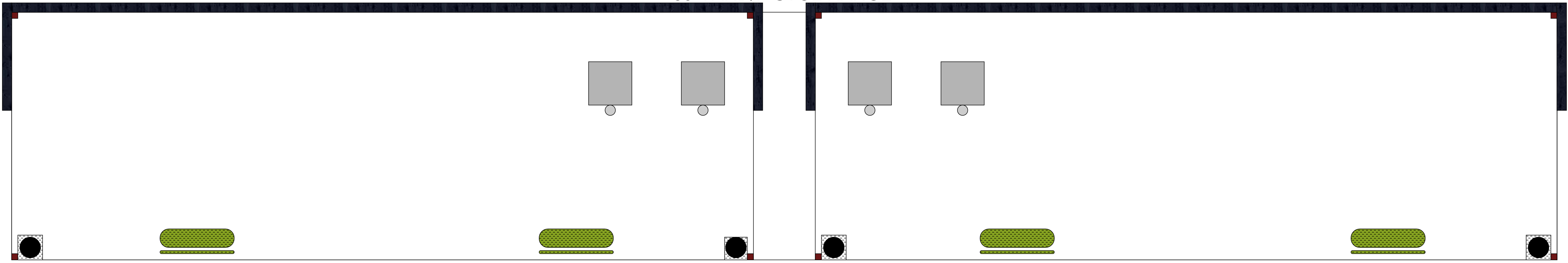




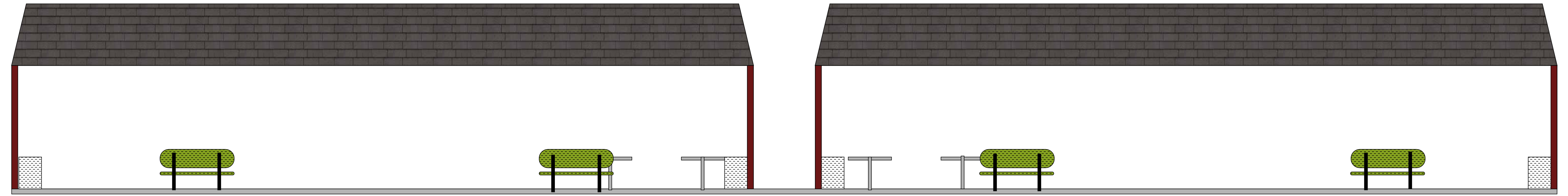
**CONVERSE COUNTY
SHOOTING RANGE
IMPROVEMENTS PROJECT**

**BUILDING &
STRUCTURE
SPECIFICATIONS**

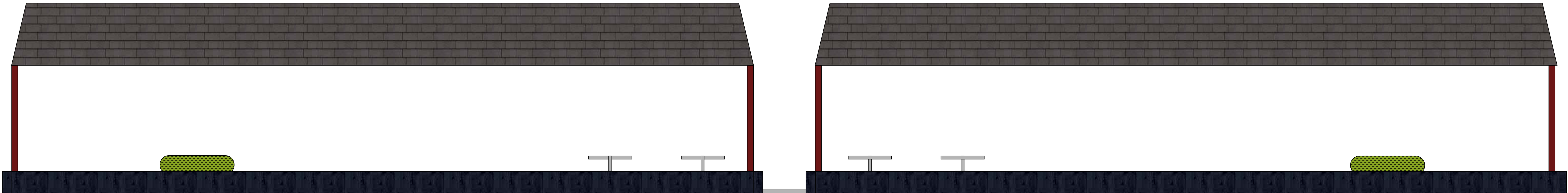
60-YARD/PISTOL RANGE



FOOTPRINT

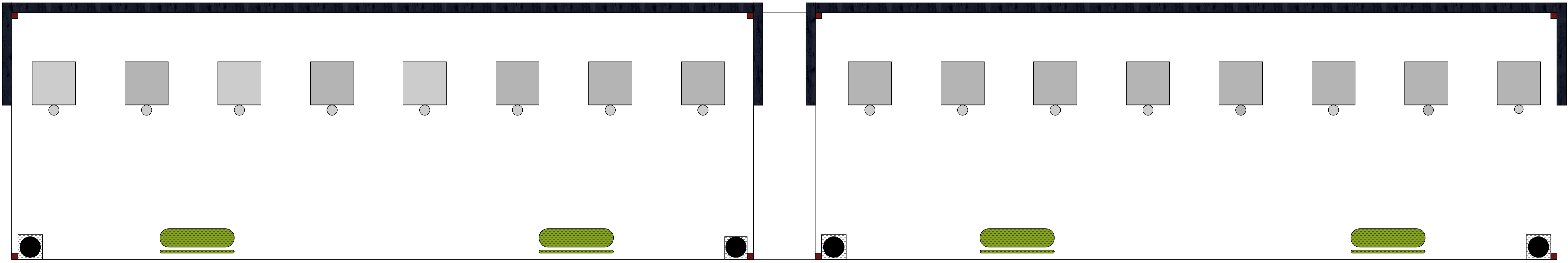


REAR VIEW

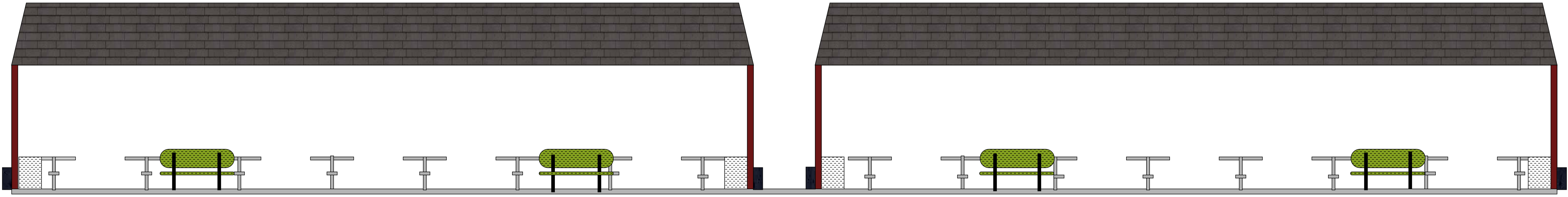


FRONT VIEW

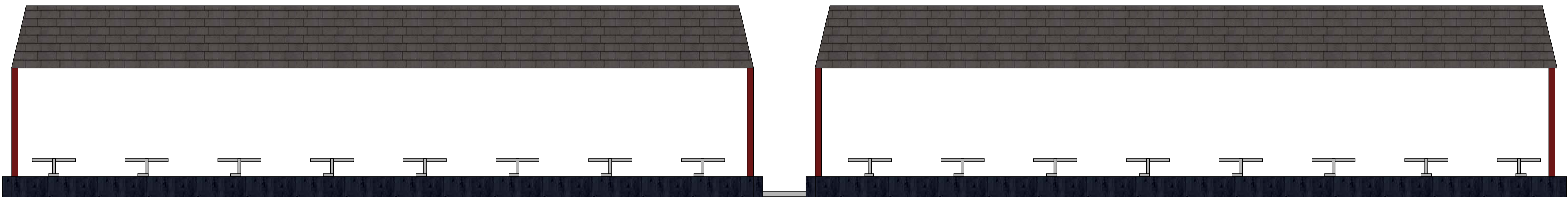
100-YARD RANGE



FOOTPRINT



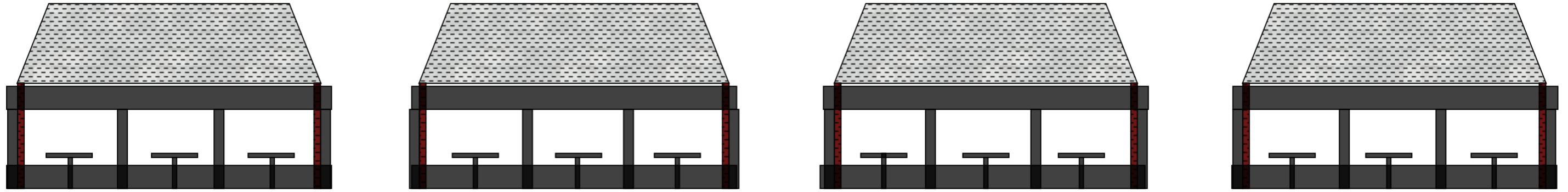
REAR VIEW



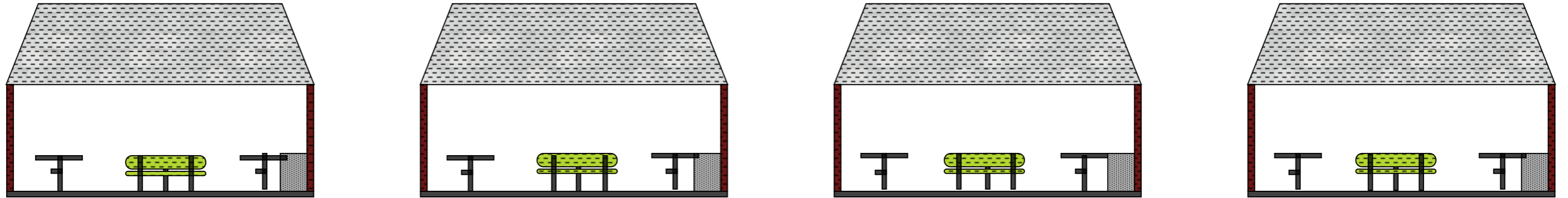
FRONT VIEW

600-YARD STRUCTURES

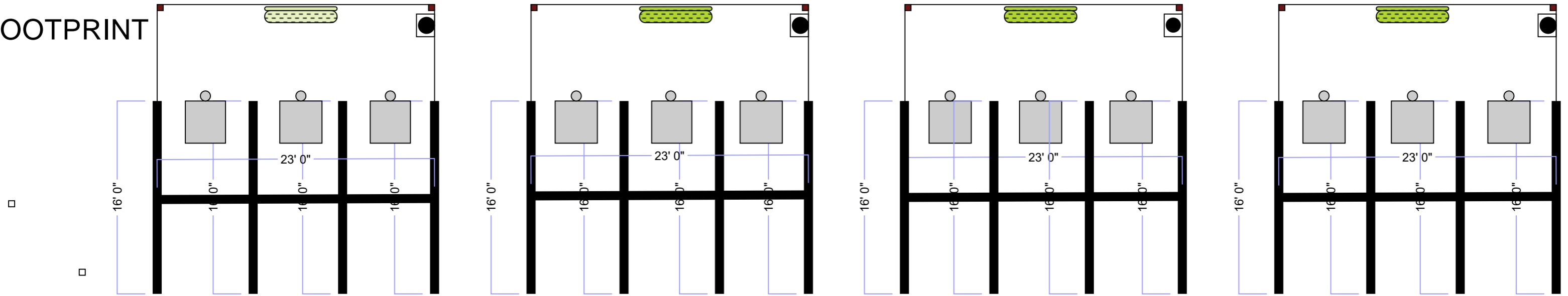
FRONT



REAR



FOOTPRINT



SUPERIOR®

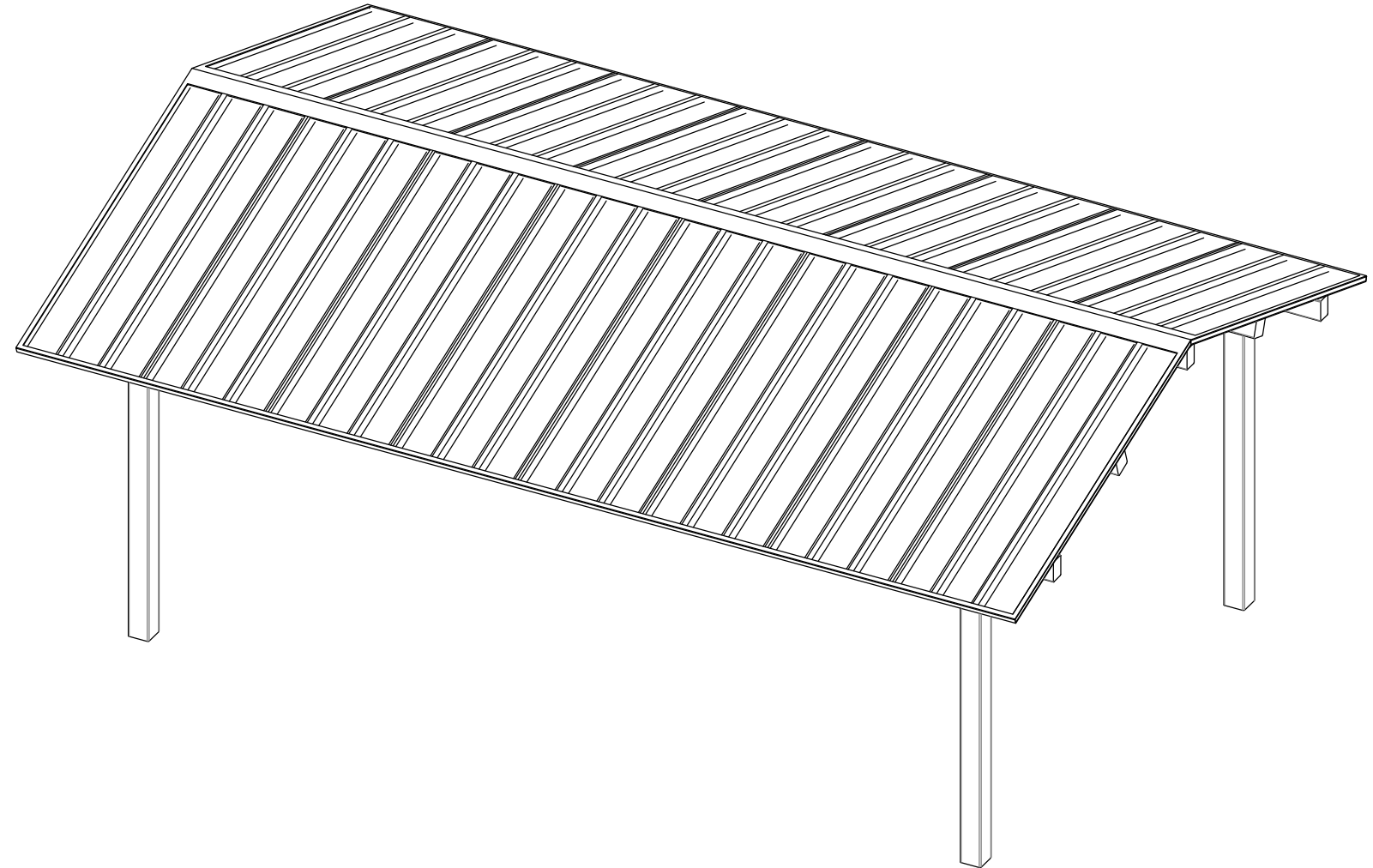
RECREATIONAL PRODUCTS

PROJECT: TBD

LOCATION: TBD

BUILDING TYPE: GE1624-AS

ROOF TYPE: MULTI-RIB



DRAWING LIST:

SHEET NUMBER	DRAWING DESCRIPTION
CS	COVER SHEET
1	ARCHITECTURAL ELEVATIONS
2	STRUCTURAL FRAMING PLAN
3	COLUMN LAYOUT

FABRICATOR APPROVALS:

CITY OF PHOENIX, AZ APPROVED FABRICATOR #C08-2010
 CITY OF LOS ANGELES, CA APPROVED FABRICATOR #1596
 CITY OF RIVERSIDE, CA APPROVED FABRICATOR #SP06-0033
 CITY OF HOUSTON, TX APPROVED FABRICATOR #470
 CLARK COUNTY, NV APPROVED FABRICATOR #264
 STATE OF UTAH APPROVED FABRICATOR 02008-14

CERTIFICATES:

MIAMI-DADE COUNTY CERTIFICATE OF COMPETENCY NO. 13-0813.16
 PCI (POWDER COATING INSTITUTE) 4000 CERTIFIED

MATERIALS:

DESCRIPTION	ASTM DESIGNATION
TUBE STEEL	A500 (GRADE B)
SCHEDULE PIPE	A53 (GRADE B)
RMT PIPE	A519
LIGHT GAGE COLD FORMED	A1003 (GRADE 50)
STRUCTURAL STEEL PLATE	A36
ROOF PANELS (STEEL)	A653

GENERAL NOTES:

UNLESS NOTED OTHERWISE, THIS STRUCTURE WAS DESIGNED TO ONLY SUPPORT WHAT IS SHOWN ON THESE DRAWINGS. SRP MUST BE CONTACTED IF ANYTHING ELSE IS TO BE ATTACHED TO THIS STRUCTURE (WALLS, COLUMN WRAPS, RAILINGS, ETC.) SO THE DESIGN OF THIS STRUCTURE CAN BE REVIEWED AND POSSIBLY REVISED.

UNLESS NOTED OTHERWISE, THIS STRUCTURE WAS DESIGNED ASSUMING A 20' SEPARATION BETWEEN ANY ADJACENT STRUCTURE WITH AN EAVE HEIGHT EQUAL TO OR GREATER THAN THE EAVE HEIGHT OF THIS STRUCTURE. IF THAT SEPARATION DOES NOT EXIST, SRP MUST BE CONTACTED SO THE DESIGN OF THIS STRUCTURE CAN BE REVIEWED AND POSSIBLY REVISED.

STRUCTURAL STEEL SHALL BE DETAILED, FABRICATED, AND ERECTED IN ACCORDANCE WITH THE LATEST EDITION OF THE AMERICAN INSTITUTE OF STEEL CONSTRUCTION (AISC) SPECIFICATION MANUAL.

ALL WELDING IS PERFORMED BY AMERICAN WELDING SOCIETY CERTIFIED WELDERS AND CONFORMS TO THE LATEST EDITION OF AWS D1.1 OR D1.3 AS REQUIRED.

PARTS SHOWN MAY BE UPGRADED DUE TO STANDARDIZED FABRICATION. REFER TO THE SHIPPING BILL OF MATERIALS FOR POSSIBLE SUBSTITUTIONS.

FOR PROPER FIELD INSTALLATION OF THE BUILDING IT IS RECOMMENDED THAT THE PRIMARY FRAME INSTALLER AND THE ROOF INSTALLER HAVE A MINIMUM FIVE (5) YEARS DOCUMENTED EXPERIENCE INSTALLING THIS TYPE OF PRODUCT.

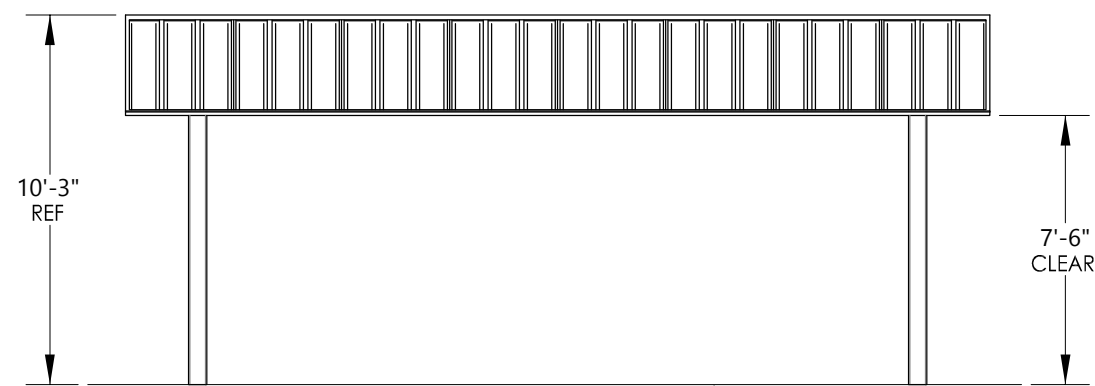
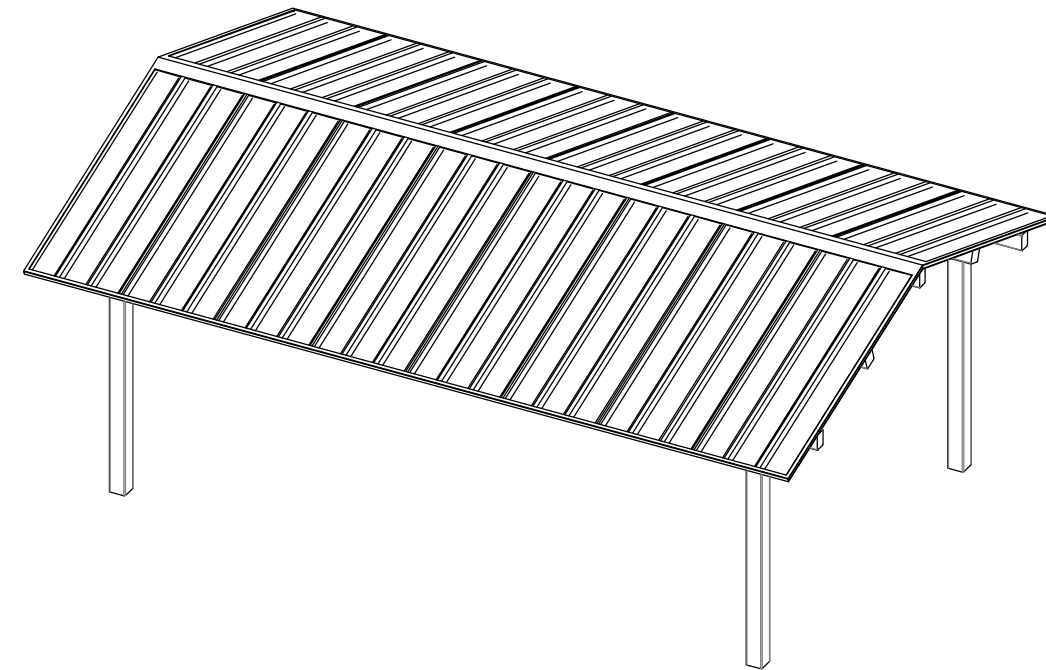
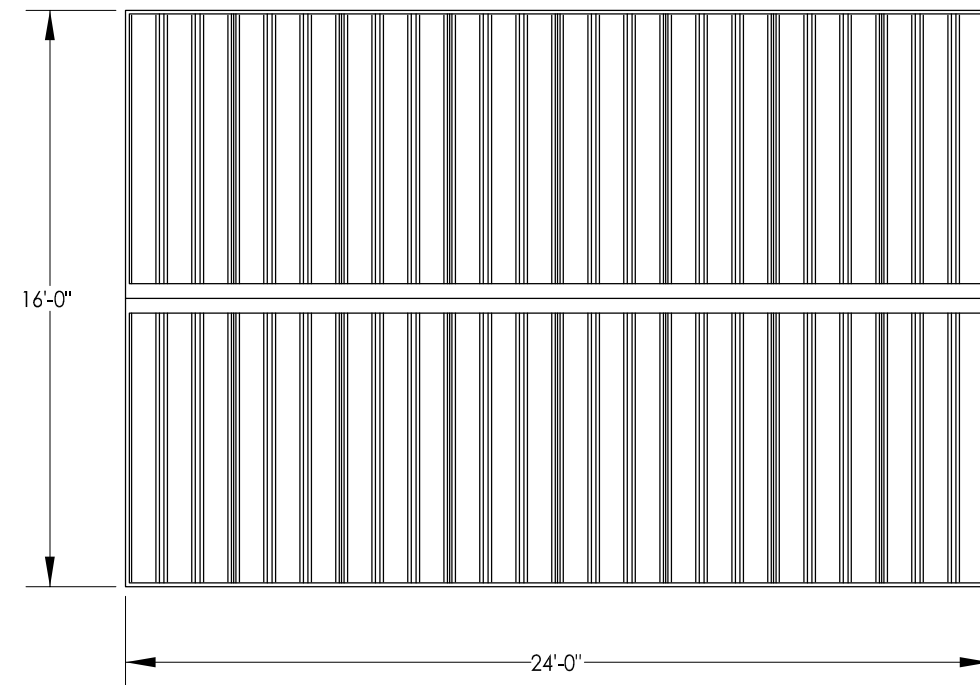
FOR PROPER FIELD INSTALLATION OF THE BUILDING IT IS RECOMMENDED THAT ELECTRIC WIRING, IF REQUIRED, BE RUN THROUGH THE STRUCTURAL MEMBERS BEFORE THE BUILDING IS ERECTED.

STOP!!
NOT FOR CONSTRUCTION
 USE FOR PRELIMINARY
 PLANNING AND ESTIMATING
 ONLY

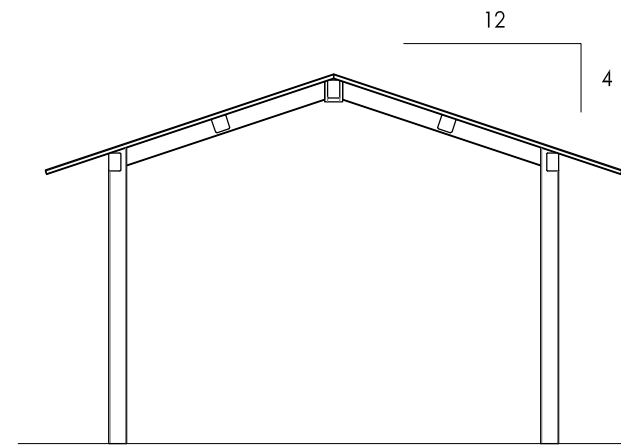
DRAWING: COVER SHEET		REV LEVEL: A	SHEET
SCALE: NTS			
SUPERIOR® RECREATIONAL PRODUCTS COPYRIGHT 2016 PATENTED OR PATENTS PENDING SUPERIOR RECREATIONAL PRODUCTS 1050 COLUMBIA DR. CARROLLTON, GA 30117		(866)341-4364 www.srpshelter.com A PLAYCORE Company	CS

GENERAL ROOF NOTES:

1. METAL ROOFING:
 - 24 GAUGE
 - GALVALUME COATED
 - KYNAR 500 PAINTED
2. TRIM COLOR MATCHES ROOF
3. SEE SRPSHELTER.COM FOR COLOR OPTIONS



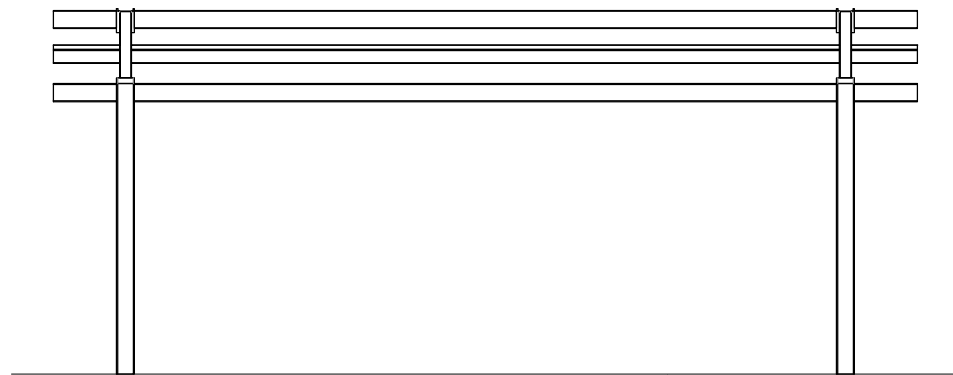
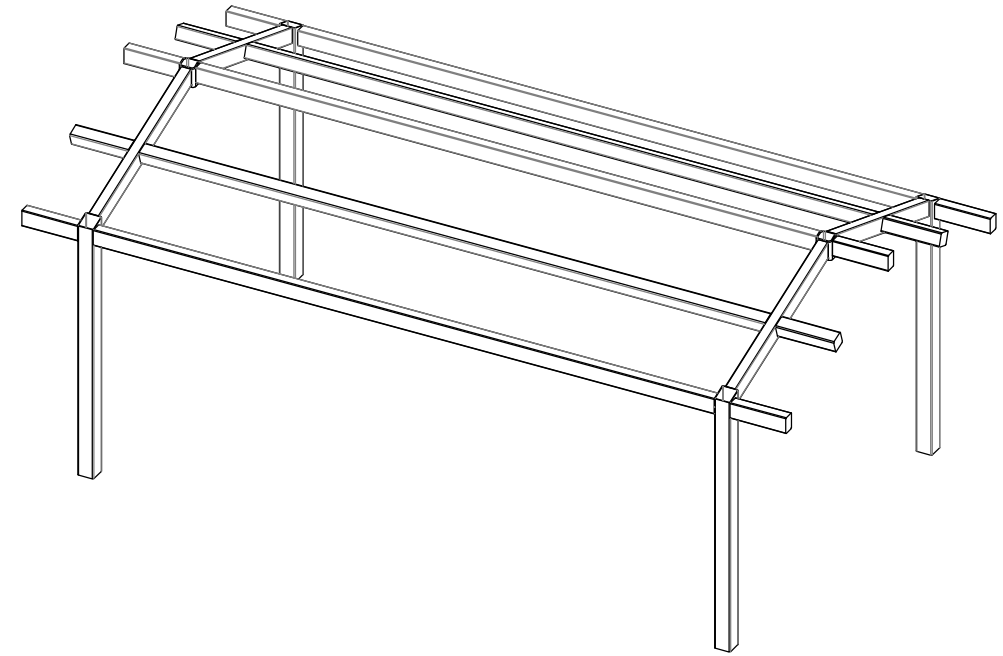
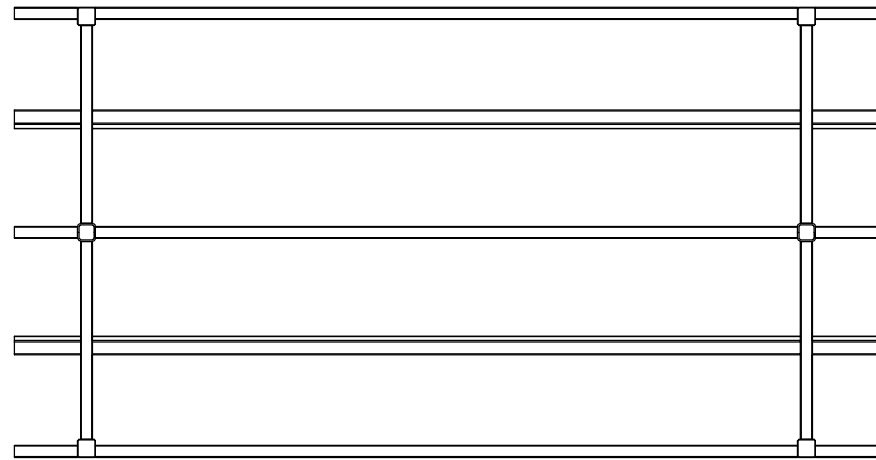
FINISH GRADE.
MOUNTING VARIES
BASED ON ENGINEERING
REQUIREMENTS.



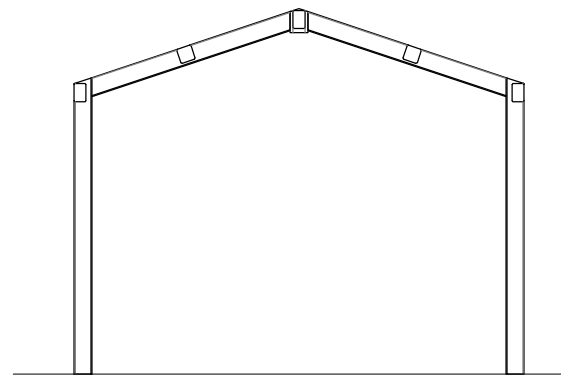
STOP!!
NOT FOR CONSTRUCTION

USE FOR PRELIMINARY
PLANNING AND ESTIMATING
ONLY

DRAWING: ARCHITECTURAL ELEVATIONS		REV LEVEL: A
SCALE: NTS	(866)341-4364	
SUPERIOR RECREATIONAL PRODUCTS COPYRIGHT 2016 PATENTED OR PATENTS PENDING SUPERIOR RECREATIONAL PRODUCTS 1050 COLUMBIA DR. CARROLLTON, GA 30117		www.srpshelter.com A PLAYCORE Company
		SHEET 1



FINISH GRADE.
MOUNTING VARIES
BASED ON ENGINEERING
REQUIREMENTS.

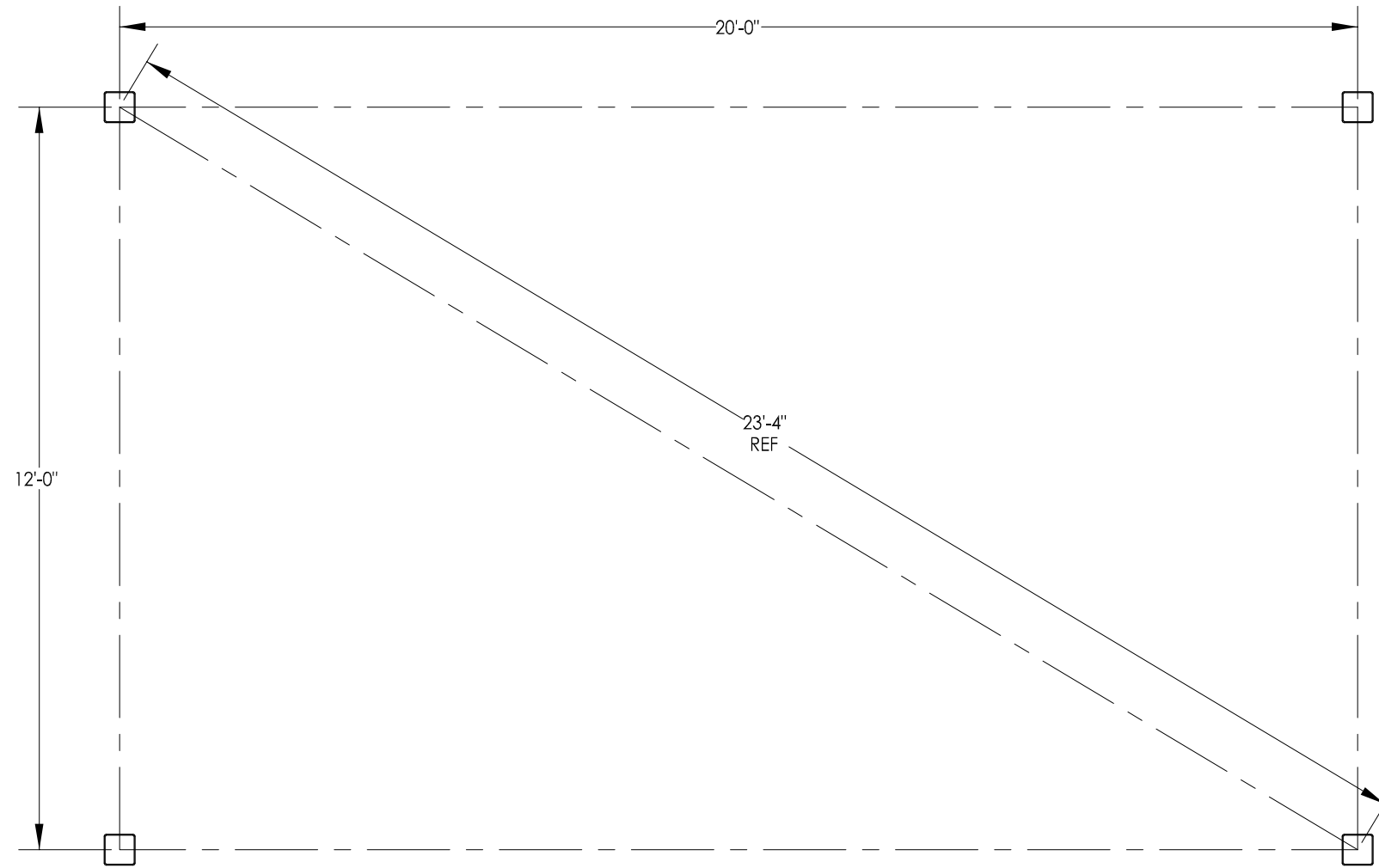


STOP!!
NOT FOR CONSTRUCTION
USE FOR PRELIMINARY
PLANNING AND ESTIMATING
ONLY

DRAWING: STRUCTURAL FRAMING PLAN	
SCALE: NTS	REV LEVEL: A
<p>SUPERIOR RECREATIONAL PRODUCTS</p> <p>PLAYCORE Company</p> <p>Copyright 2014 Patented or Patents Pending Superior Recreational Products 1050 Columbia Dr. Carrollton, GA 30117</p>	
(866)341-4364 www.srpshelter.com	SHEET 2

BASEPLATE NOTES:

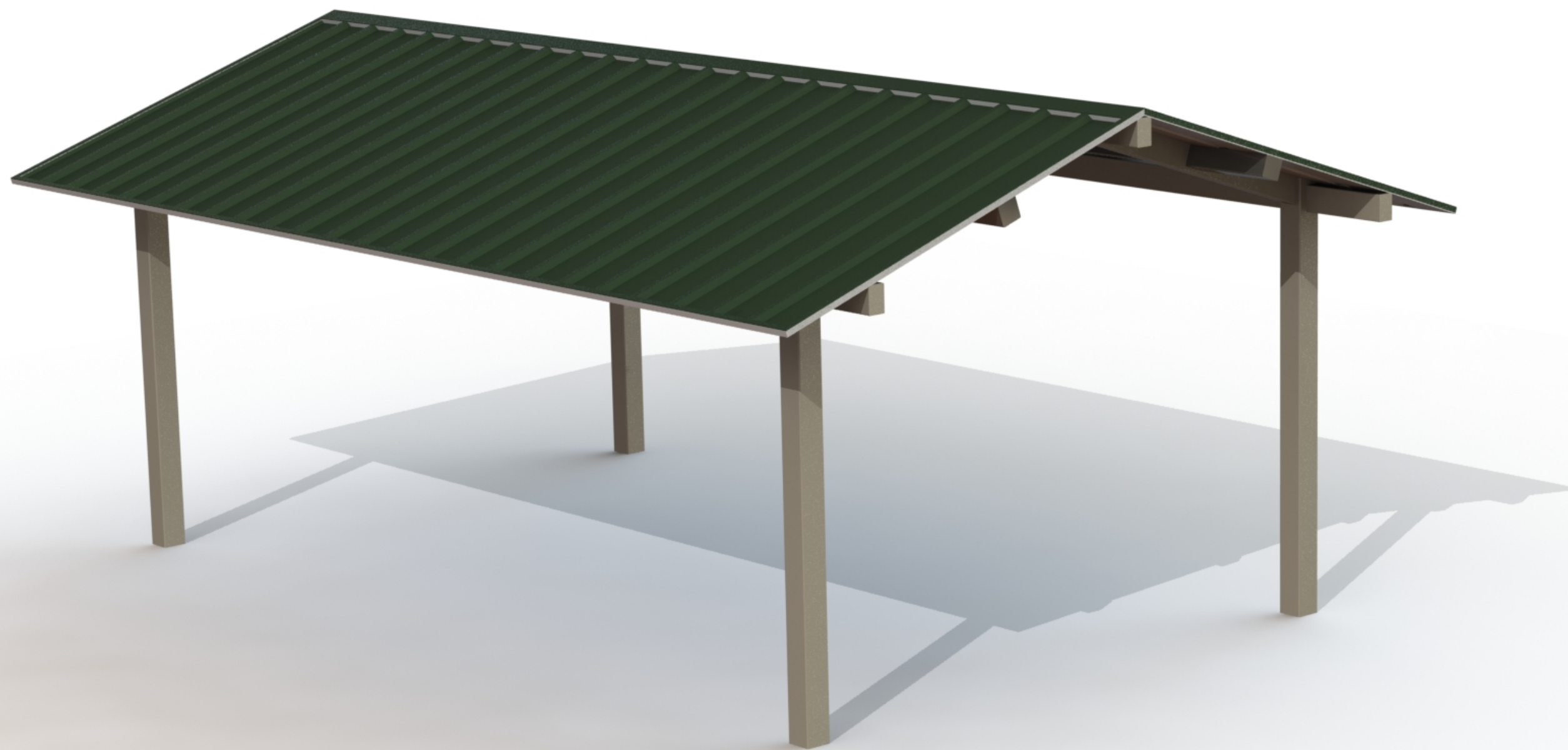
1. SRP ENGINEERING WILL DETERMINE REQUIRED BASEPLATE DESIGN AFTER ENGINEERING PACKAGE IS ORDERED.
2. CUSTOMER MAY SUGGEST PREFERRED BASEPLATE DESIGN.



STOP!!
NOT FOR CONSTRUCTION
USE FOR PRELIMINARY
PLANNING AND ESTIMATING
ONLY

DRAWING: COLUMN LAYOUT		REV LEVEL: A
SCALE: NTS		
SUPERIOR RECREATIONAL PRODUCTS COPYRIGHT 2016 PATENTED OR PATENTS PENDING SUPERIOR RECREATIONAL PRODUCTS 1050 COLUMBIA DR. CARROLLTON, GA 30117		(866)341-4364 www.srpshelter.com A PLAYCORE Company
		SHEET 3

SUPERIOR[®]
RECREATIONAL PRODUCTS



FRAME COLOR: ICED COFFEE
ROOF COLOR: EVERGREEN
COLORS SHOWN ARE FOR REFERENCE ONLY.
CONTACT ShadeAndShelter@SIBrands.com
TO REQUEST ACTUAL COLOR SAMPLES.

GE1624-AS

SUPERIOR[®]

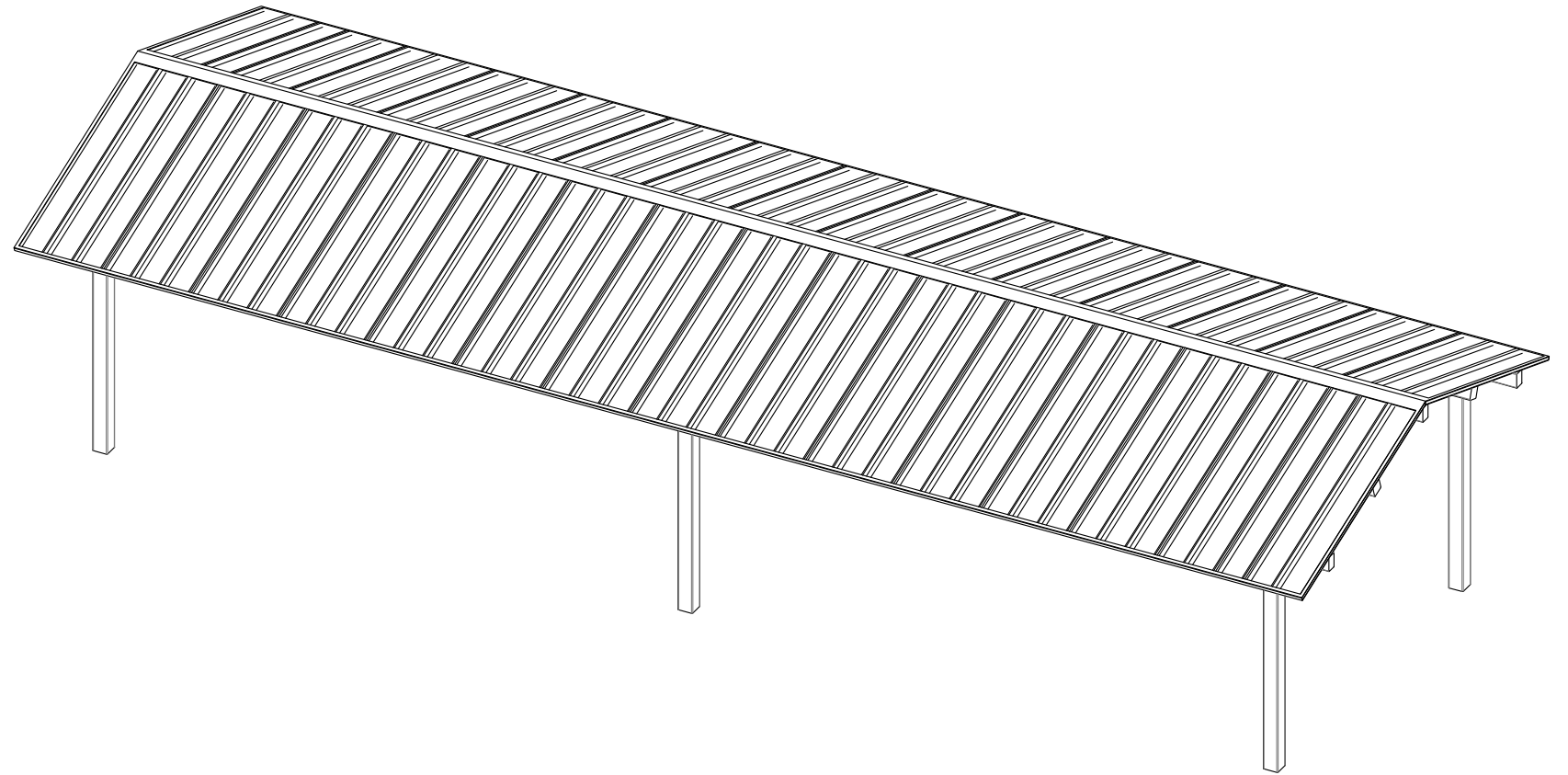
RECREATIONAL PRODUCTS

PROJECT: TBD

LOCATION: TBD

BUILDING TYPE: GE1644-AS

ROOF TYPE: MULTI-RIB



DRAWING LIST:

SHEET NUMBER	DRAWING DESCRIPTION
CS	COVER SHEET
1	ARCHITECTURAL ELEVATIONS
2	STRUCTURAL FRAMING PLAN
3	COLUMN LAYOUT

FABRICATOR APPROVALS:

CITY OF PHOENIX, AZ APPROVED FABRICATOR #C08-2010
 CITY OF LOS ANGELES, CA APPROVED FABRICATOR #1596
 CITY OF RIVERSIDE, CA APPROVED FABRICATOR #SP06-0033
 CITY OF HOUSTON, TX APPROVED FABRICATOR #470
 CLARK COUNTY, NV APPROVED FABRICATOR #264
 STATE OF UTAH APPROVED FABRICATOR 02008-14

CERTIFICATES:

MIAMI-DADE COUNTY CERTIFICATE OF COMPETENCY NO. 13-0813.16
 PCI (POWDER COATING INSTITUTE) 4000 CERTIFIED

MATERIALS:

DESCRIPTION	ASTM DESIGNATION
TUBE STEEL	A500 (GRADE B)
SCHEDULE PIPE	A53 (GRADE B)
RMT PIPE	A519
LIGHT GAGE COLD FORMED	A1003 (GRADE 50)
STRUCTURAL STEEL PLATE	A36
ROOF PANELS (STEEL)	A653

GENERAL NOTES:

UNLESS NOTED OTHERWISE, THIS STRUCTURE WAS DESIGNED TO ONLY SUPPORT WHAT IS SHOWN ON THESE DRAWINGS. SRP MUST BE CONTACTED IF ANYTHING ELSE IS TO BE ATTACHED TO THIS STRUCTURE (WALLS, COLUMN WRAPS, RAILINGS, ETC.) SO THE DESIGN OF THIS STRUCTURE CAN BE REVIEWED AND POSSIBLY REVISED.

UNLESS NOTED OTHERWISE, THIS STRUCTURE WAS DESIGNED ASSUMING A 20' SEPARATION BETWEEN ANY ADJACENT STRUCTURE WITH AN EAVE HEIGHT EQUAL TO OR GREATER THAN THE EAVE HEIGHT OF THIS STRUCTURE. IF THAT SEPARATION DOES NOT EXIST, SRP MUST BE CONTACTED SO THE DESIGN OF THIS STRUCTURE CAN BE REVIEWED AND POSSIBLY REVISED.

STRUCTURAL STEEL SHALL BE DETAILED, FABRICATED, AND ERECTED IN ACCORDANCE WITH THE LATEST EDITION OF THE AMERICAN INSTITUTE OF STEEL CONSTRUCTION (AISC) SPECIFICATION MANUAL.

ALL WELDING IS PERFORMED BY AMERICAN WELDING SOCIETY CERTIFIED WELDERS AND CONFORMS TO THE LATEST EDITION OF AWS D1.1 OR D1.3 AS REQUIRED.

PARTS SHOWN MAY BE UPGRADED DUE TO STANDARDIZED FABRICATION. REFER TO THE SHIPPING BILL OF MATERIALS FOR POSSIBLE SUBSTITUTIONS.

FOR PROPER FIELD INSTALLATION OF THE BUILDING IT IS RECOMMENDED THAT THE PRIMARY FRAME INSTALLER AND THE ROOF INSTALLER HAVE A MINIMUM FIVE (5) YEARS DOCUMENTED EXPERIENCE INSTALLING THIS TYPE OF PRODUCT.

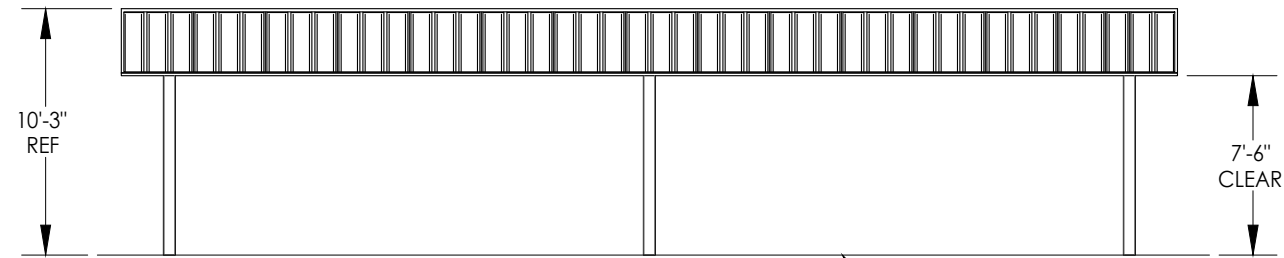
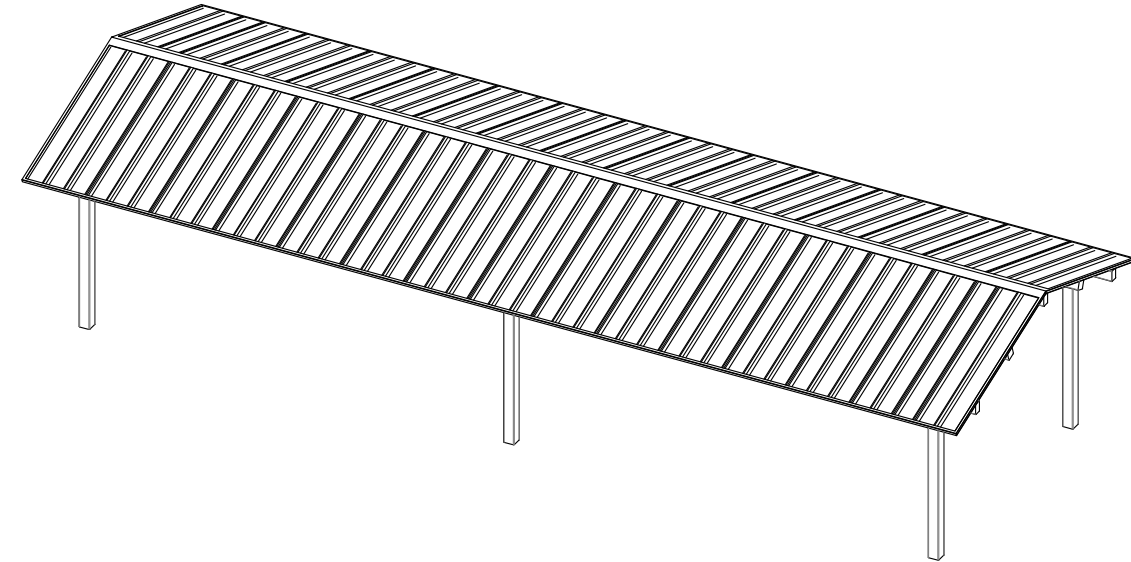
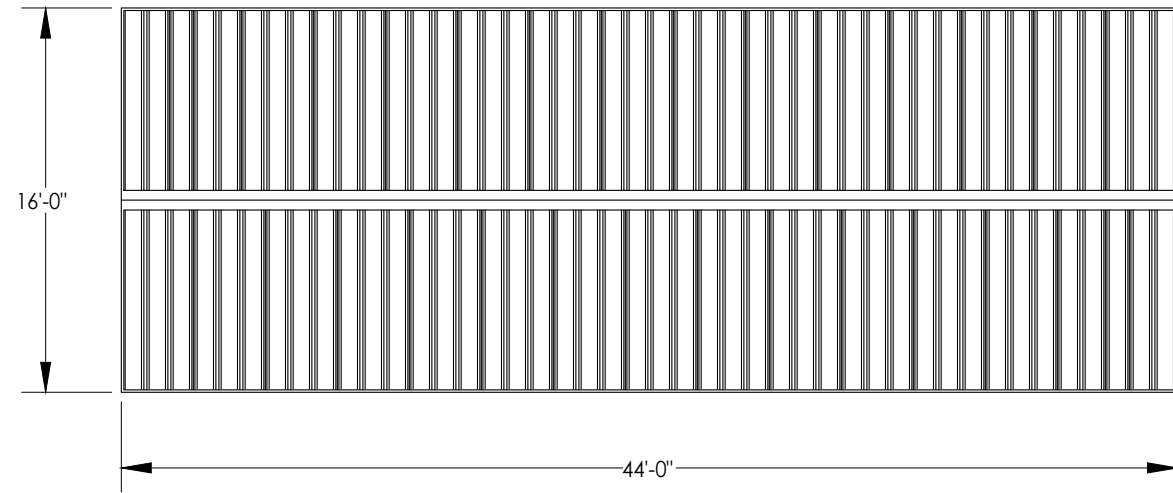
FOR PROPER FIELD INSTALLATION OF THE BUILDING IT IS RECOMMENDED THAT ELECTRIC WIRING, IF REQUIRED, BE RUN THROUGH THE STRUCTURAL MEMBERS BEFORE THE BUILDING IS ERECTED.

STOP!!
NOT FOR CONSTRUCTION
 USE FOR PRELIMINARY
 PLANNING AND ESTIMATING
 ONLY

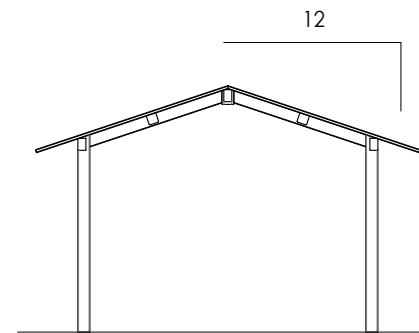
DRAWING: COVER SHEET		REV LEVEL: A
SCALE: NTS		
SUPERIOR [®] RECREATIONAL PRODUCTS <small>COPYRIGHT 2016 PATENTED OR PATENTS PENDING SUPERIOR RECREATIONAL PRODUCTS 1050 COLUMBIA DR. CARROLLTON, GA 30117</small>		(866)341-4364 www.srpshelter.com A PLAYCORE Company SHEET CS

GENERAL ROOF NOTES:

1. METAL ROOFING:
 - 24 GAUGE
 - GALVALUME COATED
 - KYNAR 500 PAINTED
2. TRIM COLOR MATCHES ROOF
3. SEE SRPSHELTER.COM FOR COLOR OPTIONS



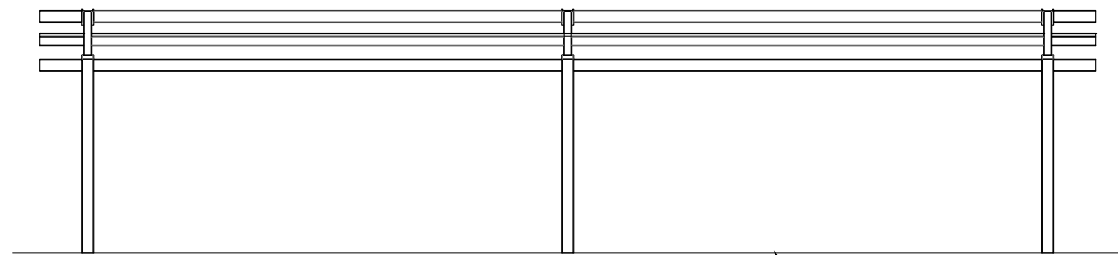
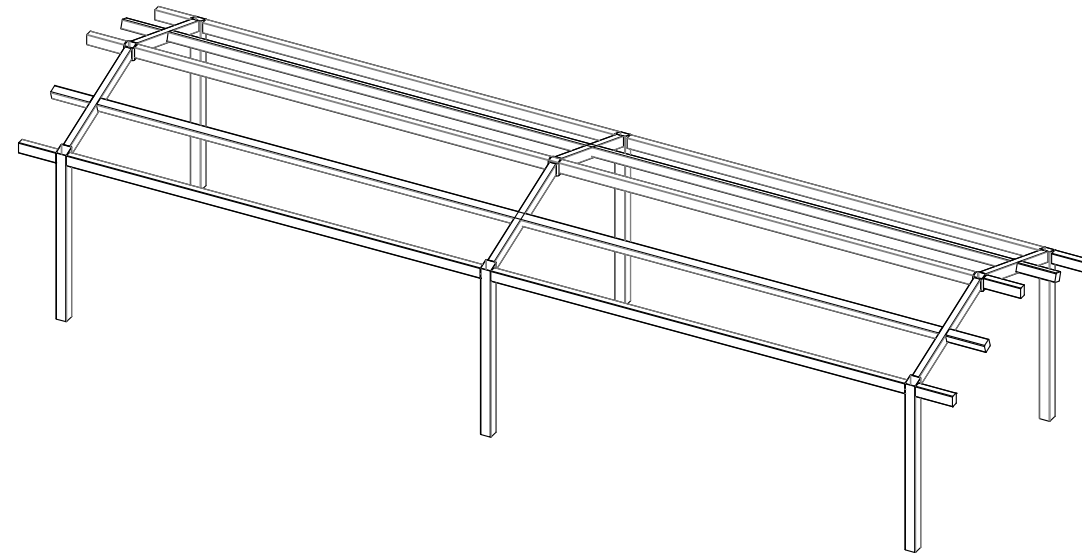
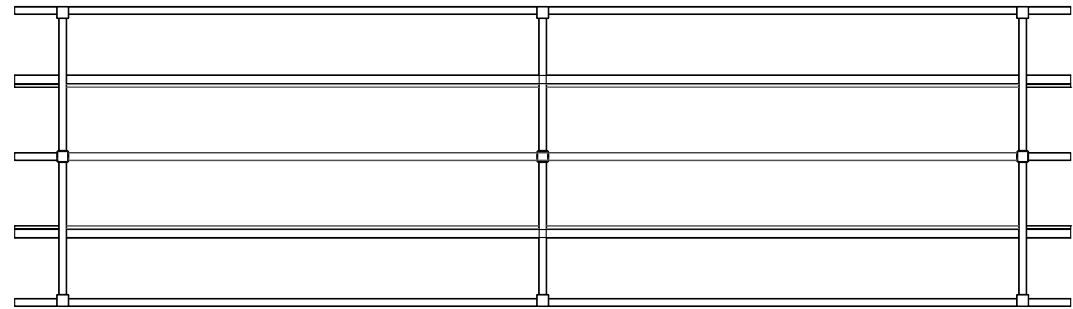
FINISH GRADE.
MOUNTING VARIES
BASED ON ENGINEERING
REQUIREMENTS.



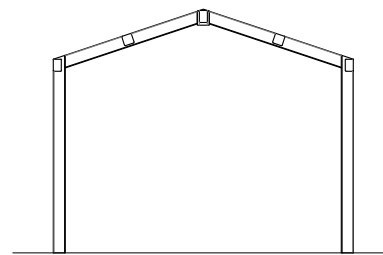
STOP!!
NOT FOR CONSTRUCTION

USE FOR PRELIMINARY
PLANNING AND ESTIMATING
ONLY

DRAWING: ARCHITECTURAL ELEVATIONS		REV LEVEL: A
SCALE: NTS		
SUPERIOR RECREATIONAL PRODUCTS COPYRIGHT 2016 PATENTED OR PATENTS PENDING SUPERIOR RECREATIONAL PRODUCTS 1050 COLUMBIA DR. CARROLLTON, GA 30117		(866)341-4364 www.srpshelter.com A PLAYCORE Company
		SHEET 1



FINISH GRADE.
MOUNTING VARIES
BASED ON ENGINEERING
REQUIREMENTS.

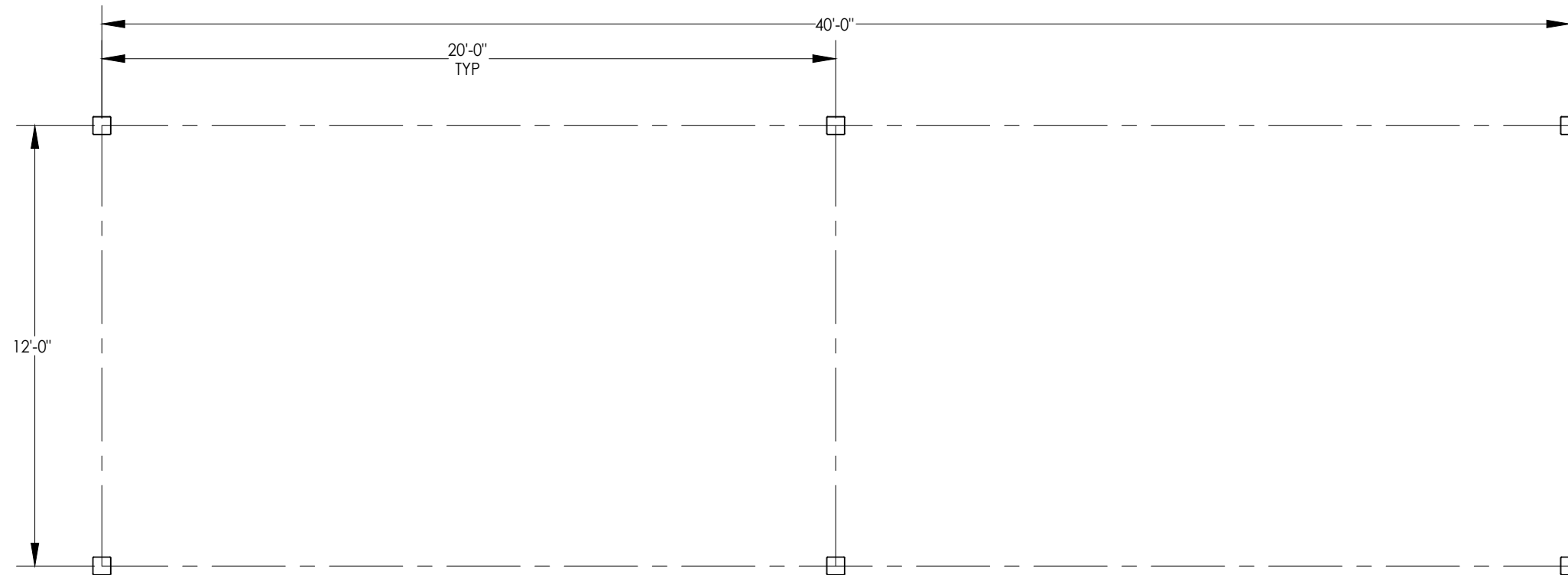


STOP!!
NOT FOR CONSTRUCTION
USE FOR PRELIMINARY
PLANNING AND ESTIMATING
ONLY

DRAWING: STRUCTURAL FRAMING PLAN	
SCALE: NTS	REV LEVEL: A
(866)341-4364 www.srpshelter.com	
<small>COPYRIGHT 2016 PATENTED OR PATENTS PENDING SUPERIOR RECREATIONAL PRODUCTS 1050 COLUMBIA DR. CARROLLTON, GA 30117</small>	

BASEPLATE NOTES:

1. SRP ENGINEERING WILL DETERMINE REQUIRED BASEPLATE DESIGN AFTER ENGINEERING PACKAGE IS ORDERED.
2. CUSTOMER MAY SUGGEST PREFERRED BASEPLATE DESIGN.

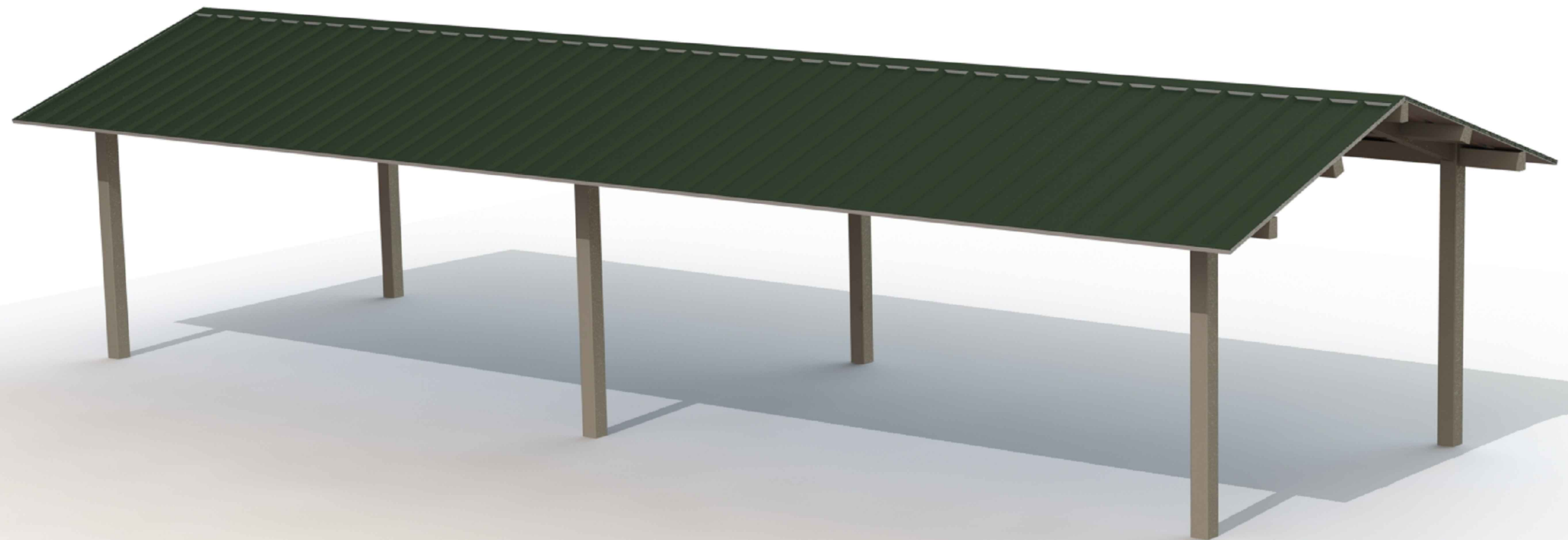


STOP!!
NOT FOR CONSTRUCTION
USE FOR PRELIMINARY
PLANNING AND ESTIMATING
ONLY

DRAWING: COLUMN LAYOUT	
SCALE: NTS	REV LEVEL: A
(866)341-4364 www.srpshelter.com	
SUPERIOR [®] RECREATIONAL PRODUCTS A PLAYCORE Company	
COPYRIGHT 2016 PATENTED OR PATENTS PENDING SUPERIOR RECREATIONAL PRODUCTS 1050 COLUMBIA DR. CARROLLTON, GA 30117	

SHEET
3

SUPERIOR[®]
RECREATIONAL PRODUCTS



FRAME COLOR: ICED COFFEE
ROOF COLOR: EVERGREEN
COLORS SHOWN ARE FOR REFERENCE ONLY.
CONTACT ShadeAndShelter@SIIBrands.com
TO REQUEST ACTUAL COLOR SAMPLES.

GE1644-AS

SUPERIOR[®]

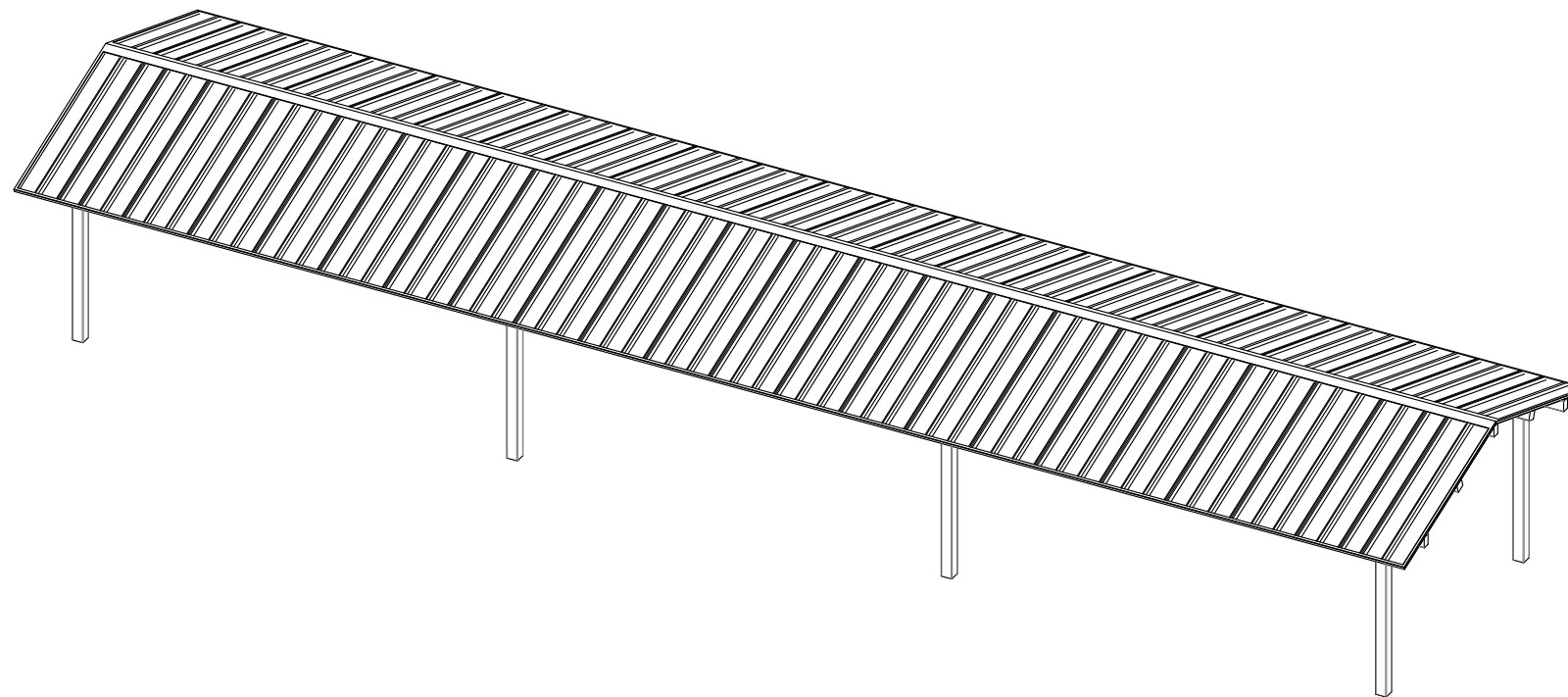
RECREATIONAL PRODUCTS

PROJECT: TBD

LOCATION: TBD

BUILDING TYPE: GE1664-AS

ROOF TYPE: MULTI-RIB



DRAWING LIST:

SHEET NUMBER	DRAWING DESCRIPTION
CS	COVER SHEET
1	ARCHITECTURAL ELEVATIONS
2	STRUCTURAL FRAMING PLAN
3	COLUMN LAYOUT

FABRICATOR APPROVALS:
 CITY OF PHOENIX, AZ APPROVED FABRICATOR #C08-2010
 CITY OF LOS ANGELES, CA APPROVED FABRICATOR #1596
 CITY OF RIVERSIDE, CA APPROVED FABRICATOR #SP06-0033
 CITY OF HOUSTON, TX APPROVED FABRICATOR #470
 CLARK COUNTY, NV APPROVED FABRICATOR #264
 STATE OF UTAH APPROVED FABRICATOR 02008-14

CERTIFICATES:
 MIAMI-DADE COUNTY CERTIFICATE OF COMPETENCY NO. 13-0813.16
 PCI (POWDER COATING INSTITUTE) 4000 CERTIFIED

MATERIALS:

DESCRIPTION	ASTM DESIGNATION
TUBE STEEL	A500 (GRADE B)
SCHEDULE PIPE	A53 (GRADE B)
RMT PIPE	A519
LIGHT GAGE COLD FORMED	A1003 (GRADE 50)
STRUCTURAL STEEL PLATE	A36
ROOF PANELS (STEEL)	A653

GENERAL NOTES:
 UNLESS NOTED OTHERWISE, THIS STRUCTURE WAS DESIGNED TO ONLY SUPPORT WHAT IS SHOWN ON THESE DRAWINGS. SRP MUST BE CONTACTED IF ANYTHING ELSE IS TO BE ATTACHED TO THIS STRUCTURE (WALLS, COLUMN WRAPS, RAILINGS, ETC.) SO THE DESIGN OF THIS STRUCTURE CAN BE REVIEWED AND POSSIBLY REVISED.

UNLESS NOTED OTHERWISE, THIS STRUCTURE WAS DESIGNED ASSUMING A 20' SEPARATION BETWEEN ANY ADJACENT STRUCTURE WITH AN EAVE HEIGHT EQUAL TO OR GREATER THAN THE EAVE HEIGHT OF THIS STRUCTURE. IF THAT SEPARATION DOES NOT EXIST, SRP MUST BE CONTACTED SO THE DESIGN OF THIS STRUCTURE CAN BE REVIEWED AND POSSIBLY REVISED.

STRUCTURAL STEEL SHALL BE DETAILED, FABRICATED, AND ERECTED IN ACCORDANCE WITH THE LATEST EDITION OF THE AMERICAN INSTITUTE OF STEEL CONSTRUCTION (AISC) SPECIFICATION MANUAL.

ALL WELDING IS PERFORMED BY AMERICAN WELDING SOCIETY CERTIFIED WELDERS AND CONFORMS TO THE LATEST EDITION OF AWS D1.1 OR D1.3 AS REQUIRED.

PARTS SHOWN MAY BE UPGRADED DUE TO STANDARDIZED FABRICATION. REFER TO THE SHIPPING BILL OF MATERIALS FOR POSSIBLE SUBSTITUTIONS.

FOR PROPER FIELD INSTALLATION OF THE BUILDING IT IS RECOMMENDED THAT THE PRIMARY FRAME INSTALLER AND THE ROOF INSTALLER HAVE A MINIMUM FIVE (5) YEARS DOCUMENTED EXPERIENCE INSTALLING THIS TYPE OF PRODUCT.

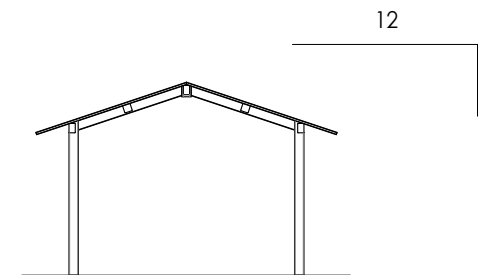
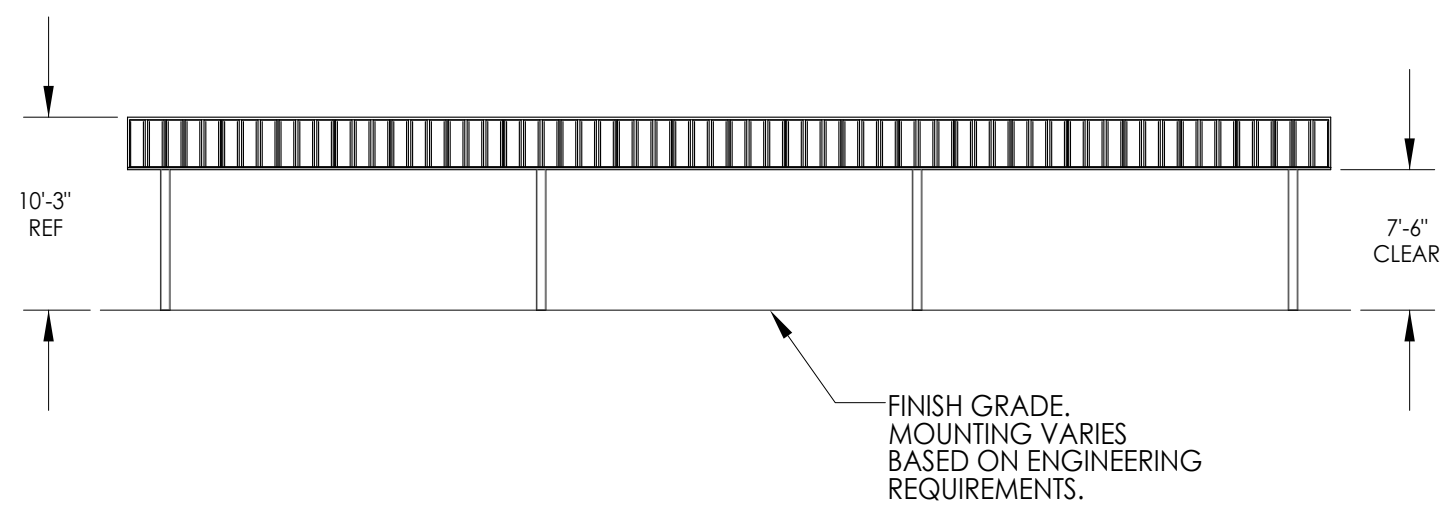
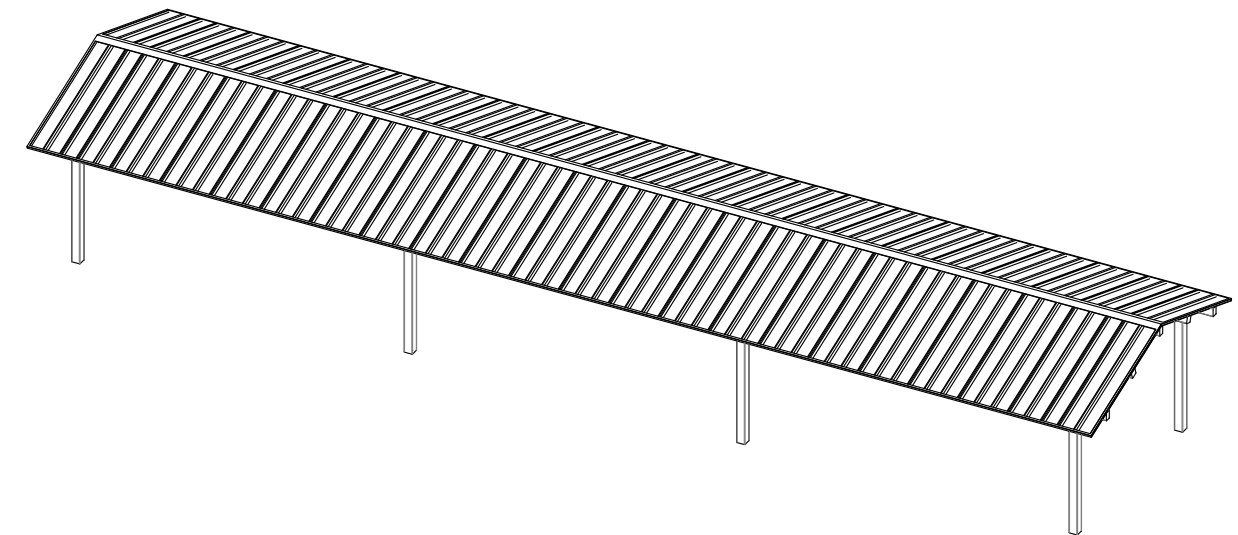
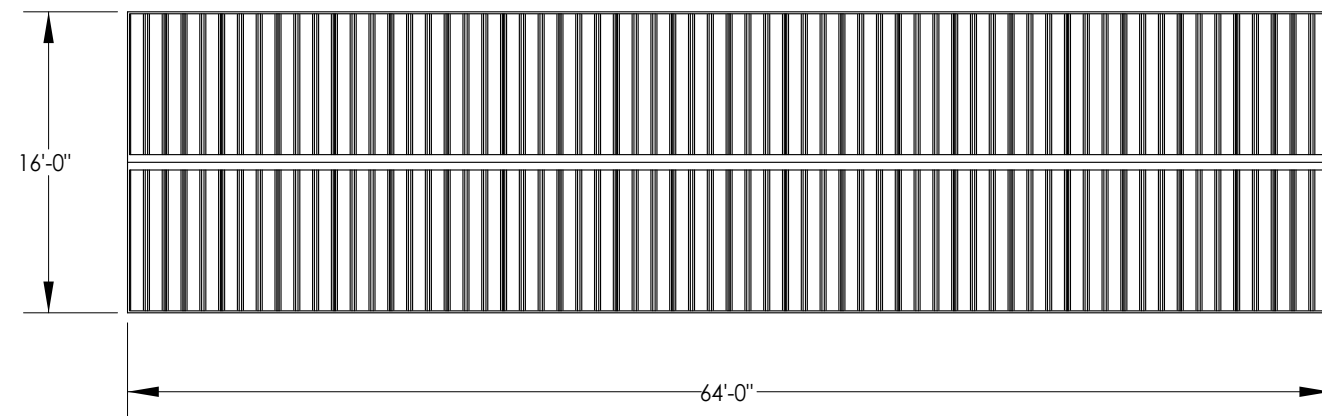
FOR PROPER FIELD INSTALLATION OF THE BUILDING IT IS RECOMMENDED THAT ELECTRIC WIRING, IF REQUIRED, BE RUN THROUGH THE STRUCTURAL MEMBERS BEFORE THE BUILDING IS ERECTED.

STOP!!
NOT FOR CONSTRUCTION
 USE FOR PRELIMINARY
 PLANNING AND ESTIMATING
 ONLY

DRAWING: COVER SHEET		REV LEVEL: A
SCALE: NTS		
SUPERIOR[®] RECREATIONAL PRODUCTS (866)341-4364 www.srpshelter.com		SHEET
COPYRIGHT 2016 PATENTED OR PATENTS PENDING SUPERIOR RECREATIONAL PRODUCTS 1050 COLUMBIA DR. CARROLLTON, GA 30117		CS

GENERAL ROOF NOTES:

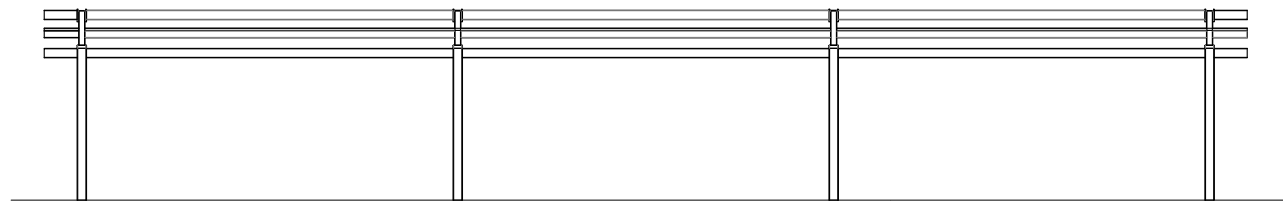
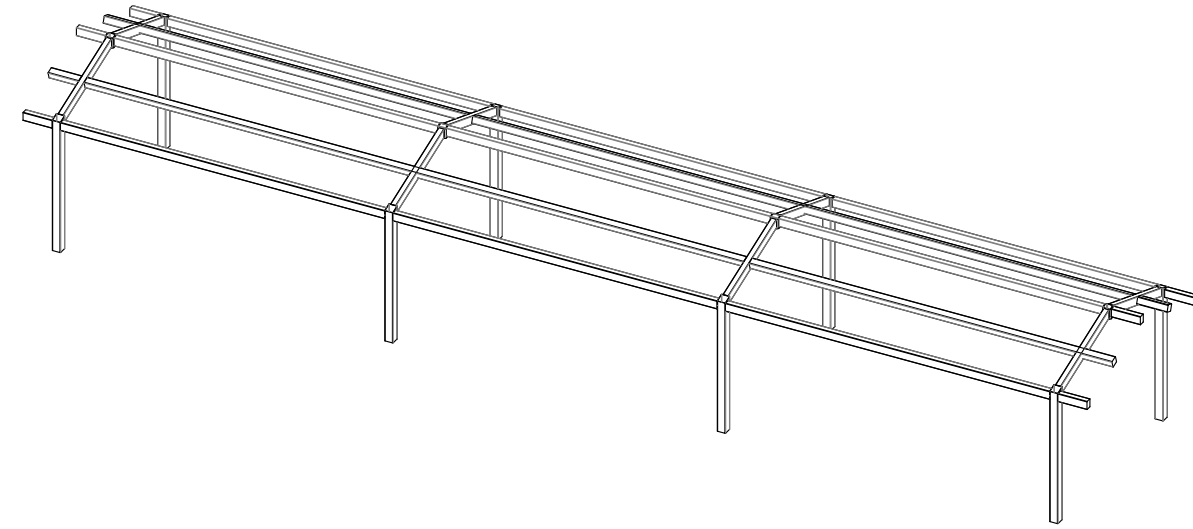
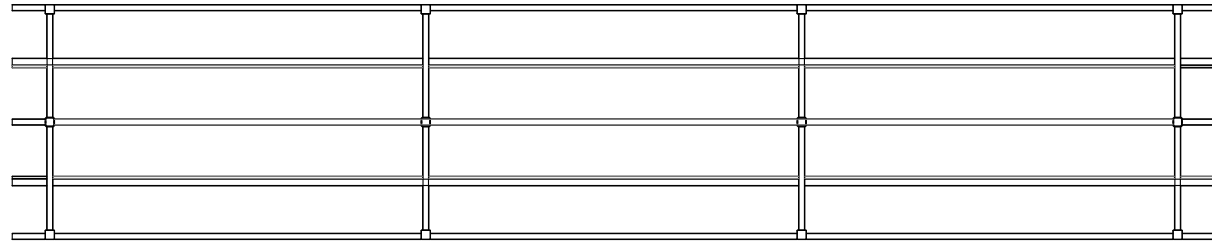
1. METAL ROOFING:
 - 24 GAUGE
 - GALVALUME COATED
 - KYNAR 500 PAINTED
2. TRIM COLOR MATCHES ROOF
3. SEE SRPSHELTER.COM FOR COLOR OPTIONS



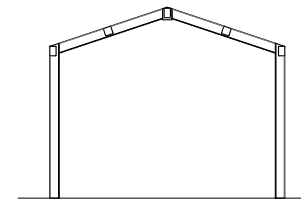
STOP!!
NOT FOR CONSTRUCTION

**USE FOR PRELIMINARY
 PLANNING AND ESTIMATING
 ONLY**

DRAWING: ARCHITECTURAL ELEVATIONS	
SCALE: NTS	REV LEVEL: A
(866)341-4364	
www.srpshelter.com	
SUPERIOR [®] RECREATIONAL PRODUCTS <small>COPYRIGHT 2016 PATENTED OR PATENTS PENDING</small> A PLAYCORE Company <small>SUPERIOR RECREATIONAL PRODUCTS 1050 COLUMBIA DR. CARROLLTON, GA 30117</small>	
SHEET	1



FINISH GRADE.
MOUNTING VARIES
BASED ON ENGINEERING
REQUIREMENTS.



STOP!!
NOT FOR CONSTRUCTION

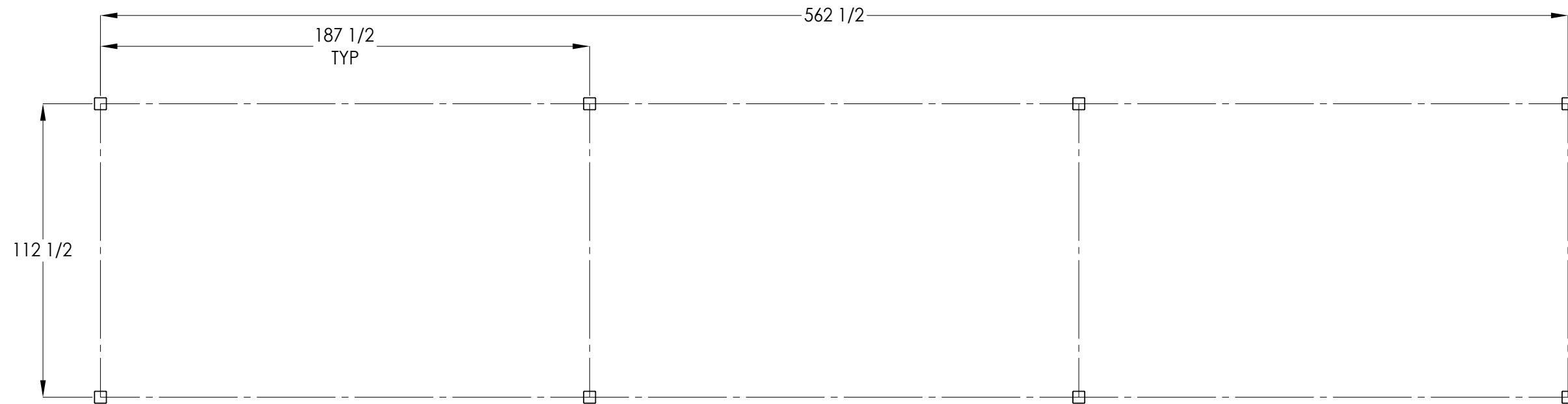
USE FOR PRELIMINARY
PLANNING AND ESTIMATING
ONLY

DRAWING: STRUCTURAL FRAMING PLAN	
SCALE: NTS	REV LEVEL: A
SUPERIOR [®] RECREATIONAL PRODUCTS A PLAYCORE Company	
(866)341-4364 www.srpshelter.com	
SUPERIOR RECREATIONAL PRODUCTS 1050 COLUMBIA DR. CARROLLTON, GA 30117	

SHEET
2

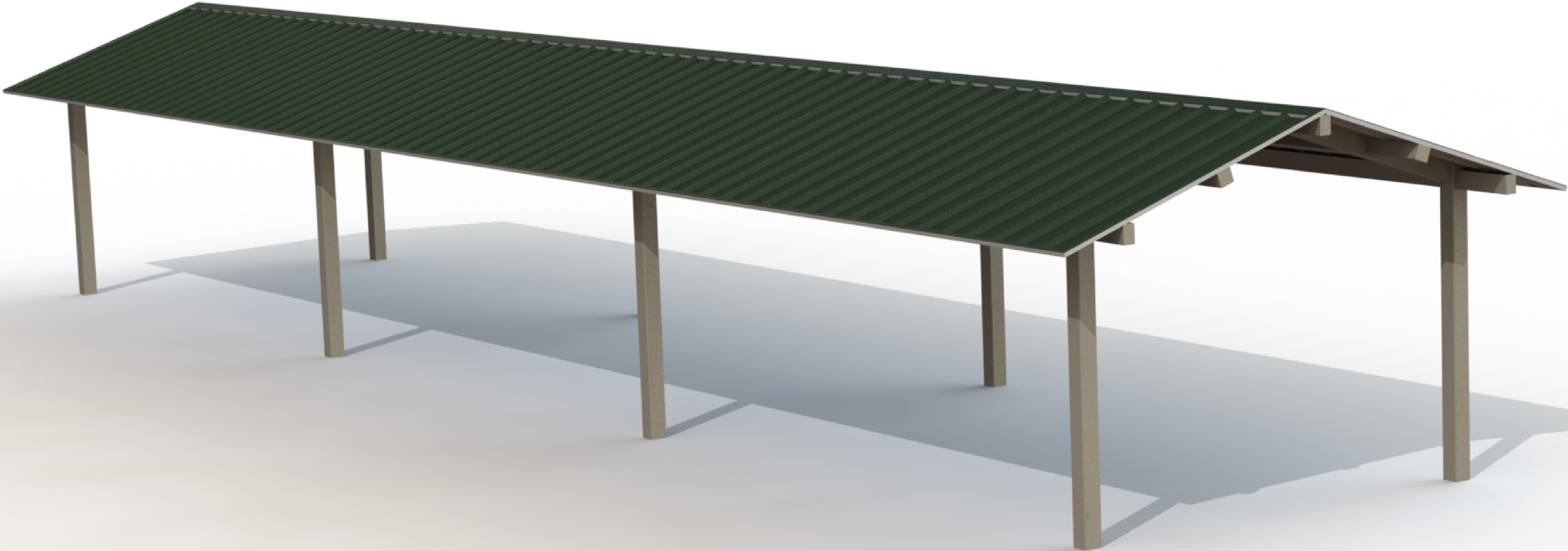
BASEPLATE NOTES:

1. SRP ENGINEERING WILL DETERMINE REQUIRED BASEPLATE DESIGN AFTER ENGINEERING PACKAGE IS ORDERED.
2. CUSTOMER MAY SUGGEST PREFERRED BASEPLATE DESIGN.



STOP!!
NOT FOR CONSTRUCTION
USE FOR PRELIMINARY
PLANNING AND ESTIMATING
ONLY

DRAWING: COLUMN LAYOUT		REV LEVEL: A
SCALE: NTS		
SUPERIOR RECREATIONAL PRODUCTS COPYRIGHT 2016 PATENTED OR PATENTS PENDING SUPERIOR RECREATIONAL PRODUCTS 1050 COLUMBIA DR. CARROLLTON, GA 30117		(866)341-4364 www.srpshelter.com A PLAYCORE Company
		SHEET 3



FRAME COLOR: ICED COFFEE
ROOF COLOR: EVERGREEN
COLORS SHOWN ARE FOR REFERENCE ONLY.
CONTACT ShadeAndShelter@SIBrands.com
TO REQUEST ACTUAL COLOR SAMPLES.

GE1664-AS

SUPERIOR[®]

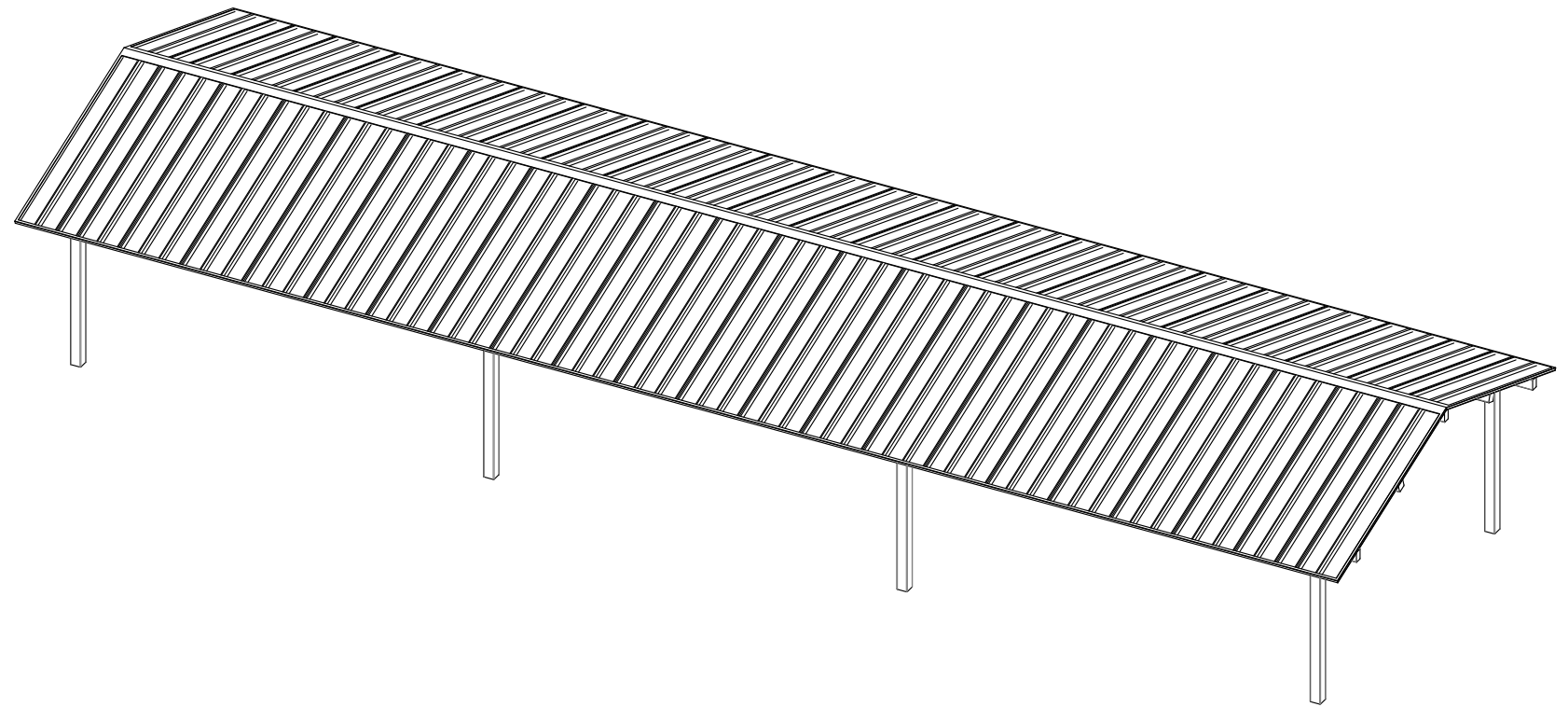
RECREATIONAL PRODUCTS

PROJECT: TBD

LOCATION: TBD

BUILDING TYPE: GE2064-AS

ROOF TYPE: MULTI-RIB



DRAWING LIST:

SHEET NUMBER	DRAWING DESCRIPTION
CS	COVER SHEET
1	ARCHITECTURAL ELEVATIONS
2	STRUCTURAL FRAMING PLAN
3	COLUMN LAYOUT

FABRICATOR APPROVALS:
 CITY OF PHOENIX, AZ APPROVED FABRICATOR #C08-2010
 CITY OF LOS ANGELES, CA APPROVED FABRICATOR #1596
 CITY OF RIVERSIDE, CA APPROVED FABRICATOR #SP06-0033
 CITY OF HOUSTON, TX APPROVED FABRICATOR #470
 CLARK COUNTY, NV APPROVED FABRICATOR #264
 STATE OF UTAH APPROVED FABRICATOR 02008-14

CERTIFICATES:
 MIAMI-DADE COUNTY CERTIFICATE OF COMPETENCY NO. 13-0813.16
 PCI (POWDER COATING INSTITUTE) 4000 CERTIFIED

MATERIALS:

DESCRIPTION	ASTM DESIGNATION
TUBE STEEL	A500 (GRADE B)
SCHEDULE PIPE	A53 (GRADE B)
RMT PIPE	A519
LIGHT GAGE COLD FORMED	A1003 (GRADE 50)
STRUCTURAL STEEL PLATE	A36
ROOF PANELS (STEEL)	A653

GENERAL NOTES:
 UNLESS NOTED OTHERWISE, THIS STRUCTURE WAS DESIGNED TO ONLY SUPPORT WHAT IS SHOWN ON THESE DRAWINGS. SRP MUST BE CONTACTED IF ANYTHING ELSE IS TO BE ATTACHED TO THIS STRUCTURE (WALLS, COLUMN WRAPS, RAILINGS, ETC.) SO THE DESIGN OF THIS STRUCTURE CAN BE REVIEWED AND POSSIBLY REVISED.

UNLESS NOTED OTHERWISE, THIS STRUCTURE WAS DESIGNED ASSUMING A 20' SEPARATION BETWEEN ANY ADJACENT STRUCTURE WITH AN EAVE HEIGHT EQUAL TO OR GREATER THAN THE EAVE HEIGHT OF THIS STRUCTURE. IF THAT SEPARATION DOES NOT EXIST, SRP MUST BE CONTACTED SO THE DESIGN OF THIS STRUCTURE CAN BE REVIEWED AND POSSIBLY REVISED.

STRUCTURAL STEEL SHALL BE DETAILED, FABRICATED, AND ERECTED IN ACCORDANCE WITH THE LATEST EDITION OF THE AMERICAN INSTITUTE OF STEEL CONSTRUCTION (AISC) SPECIFICATION MANUAL.

ALL WELDING IS PERFORMED BY AMERICAN WELDING SOCIETY CERTIFIED WELDERS AND CONFORMS TO THE LATEST EDITION OF AWS D1.1 OR D1.3 AS REQUIRED.

PARTS SHOWN MAY BE UPGRADED DUE TO STANDARDIZED FABRICATION. REFER TO THE SHIPPING BILL OF MATERIALS FOR POSSIBLE SUBSTITUTIONS.

FOR PROPER FIELD INSTALLATION OF THE BUILDING IT IS RECOMMENDED THAT THE PRIMARY FRAME INSTALLER AND THE ROOF INSTALLER HAVE A MINIMUM FIVE (5) YEARS DOCUMENTED EXPERIENCE INSTALLING THIS TYPE OF PRODUCT.

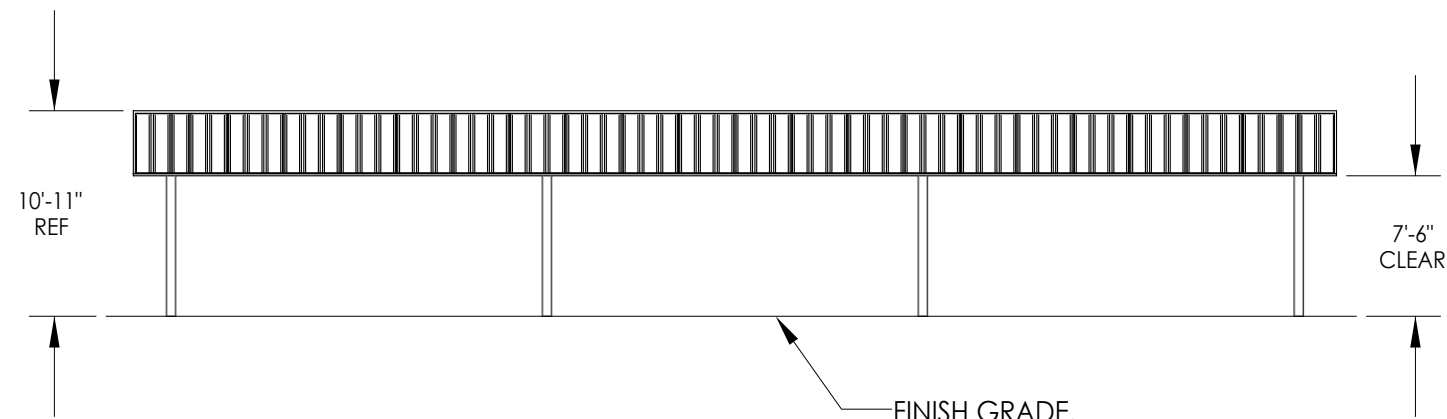
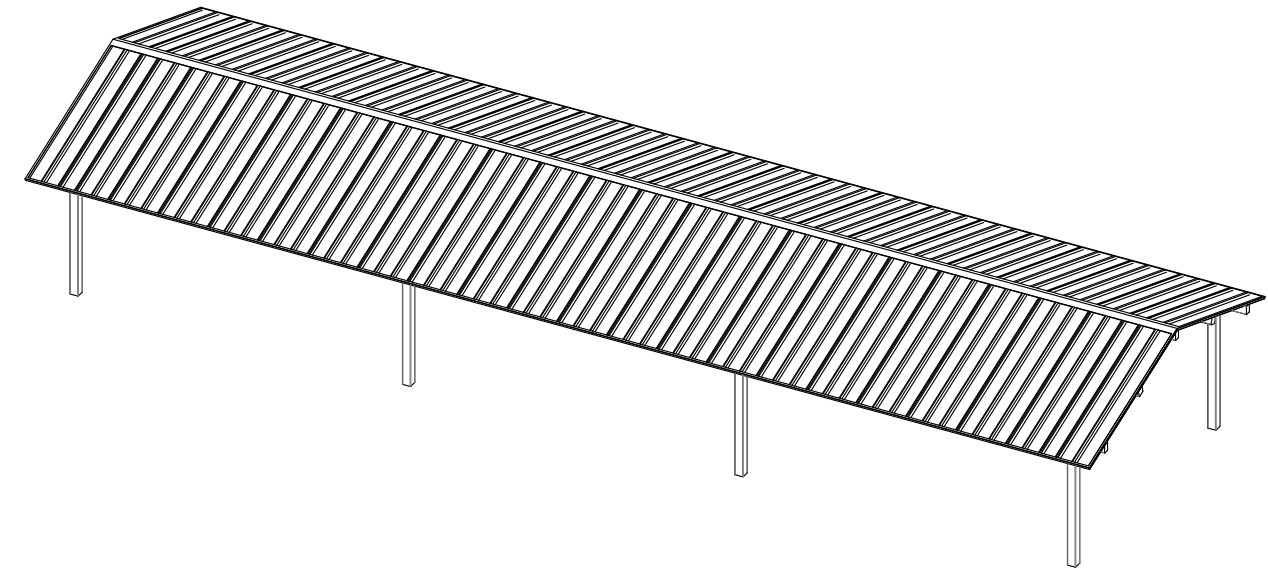
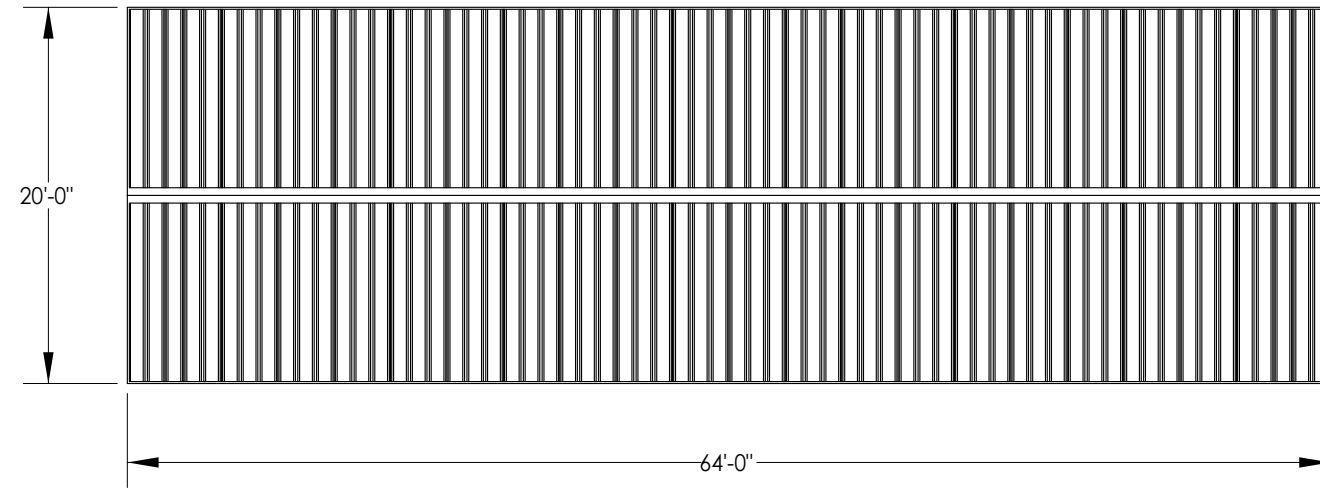
FOR PROPER FIELD INSTALLATION OF THE BUILDING IT IS RECOMMENDED THAT ELECTRIC WIRING, IF REQUIRED, BE RUN THROUGH THE STRUCTURAL MEMBERS BEFORE THE BUILDING IS ERECTED.

STOP!!
NOT FOR CONSTRUCTION
 USE FOR PRELIMINARY
 PLANNING AND ESTIMATING
 ONLY

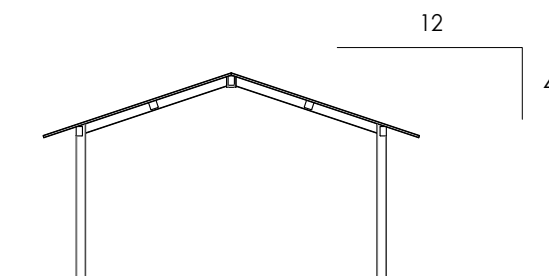
DRAWING: COVER SHEET		REV LEVEL: A
SCALE: NTS		
SUPERIOR[®] RECREATIONAL PRODUCTS (866)341-4364 www.srpshelter.com		SHEET CS
COPYRIGHT 2016 PATENTED OR PATENTS PENDING SUPERIOR RECREATIONAL PRODUCTS 1050 COLUMBIA DR. CARROLLTON, GA 30117		A PLAYCORE Company

GENERAL ROOF NOTES:

1. METAL ROOFING:
 - 24 GAUGE
 - GALVALUME COATED
 - KYNAR 500 PAINTED
2. TRIM COLOR MATCHES ROOF
3. SEE SRPSHELTER.COM FOR COLOR OPTIONS



FINISH GRADE.
MOUNTING VARIES
BASED ON ENGINEERING
REQUIREMENTS.

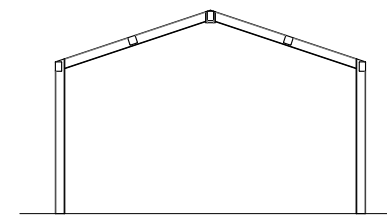
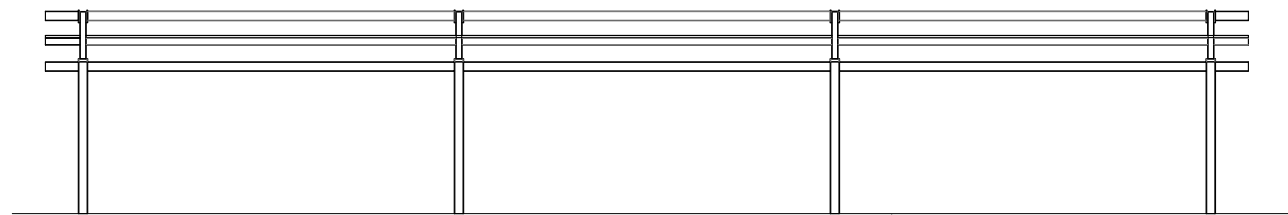
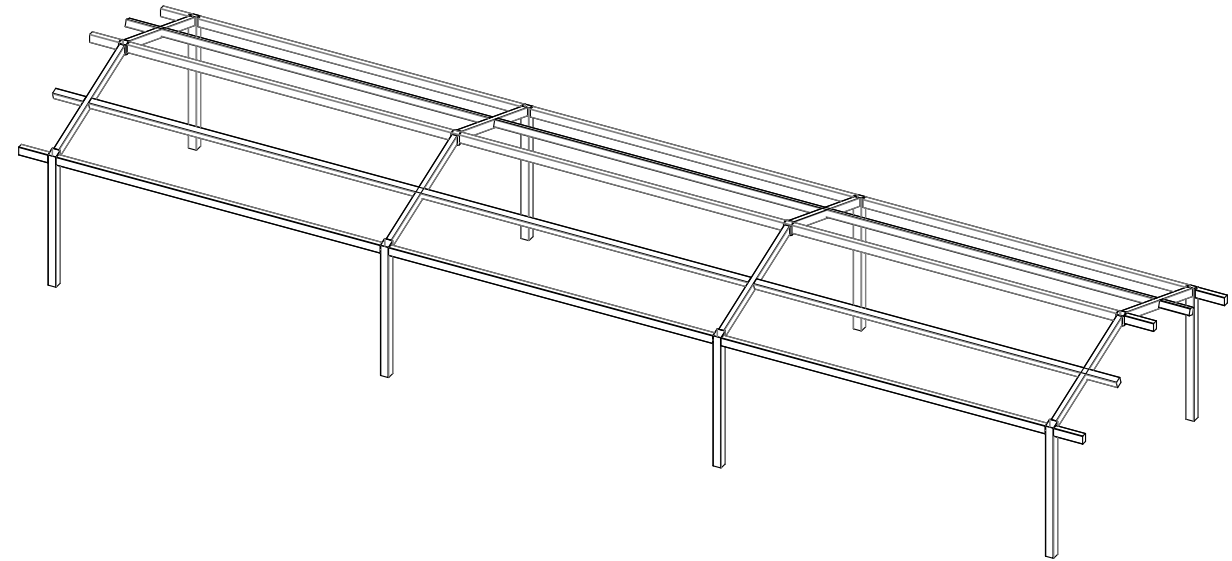


STOP!!
NOT FOR CONSTRUCTION

**USE FOR PRELIMINARY
PLANNING AND ESTIMATING
ONLY**

DRAWING: ARCHITECTURAL ELEVATIONS	
SCALE: NTS	REV LEVEL: A
(866)341-4364	
www.srpshelter.com	
SUPERIOR [®] RECREATIONAL PRODUCTS	
COPYRIGHT 2016 PATENTED OR PATENTS PENDING	
A PLAYCORE Company	
SUPERIOR RECREATIONAL PRODUCTS 1050 COLUMBIA DR. CARROLLTON, GA 30117	

SHEET
1



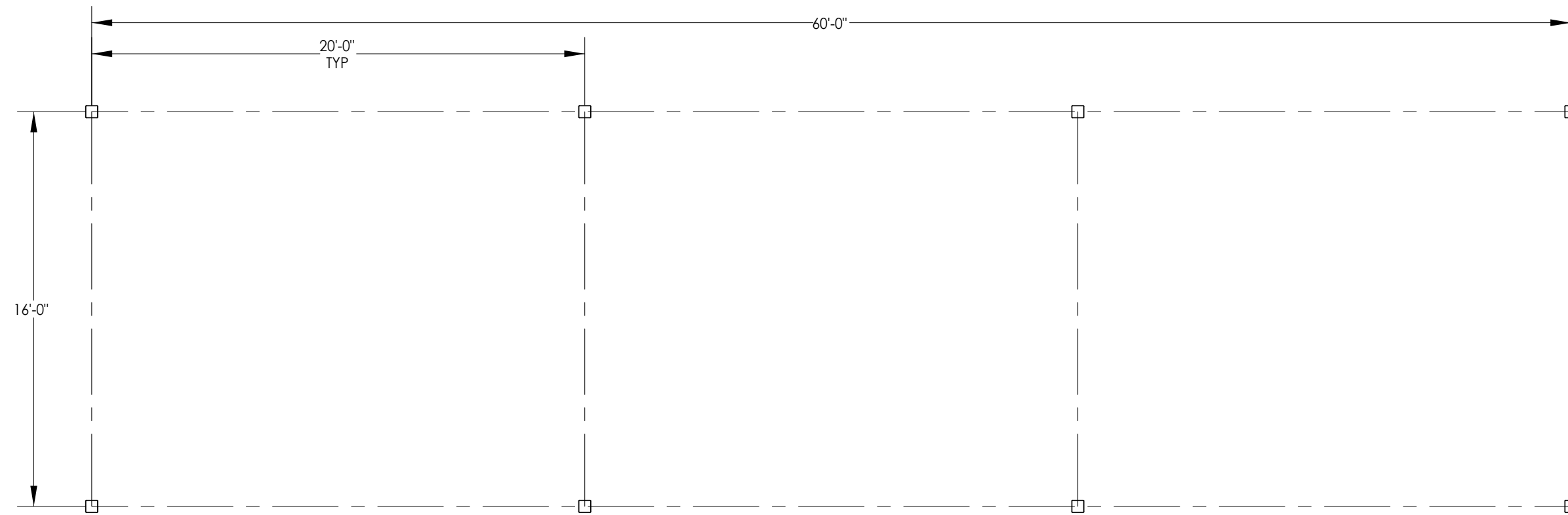
FINISH GRADE.
MOUNTING VARIES
BASED ON ENGINEERING
REQUIREMENTS.

STOP!!
NOT FOR CONSTRUCTION
USE FOR PRELIMINARY
PLANNING AND ESTIMATING
ONLY

DRAWING: STRUCTURAL FRAMING PLAN	
SCALE: NTS	REV LEVEL: A
<p>(866)341-4364 www.srpshelter.com</p> <p>SUPERIOR RECREATIONAL PRODUCTS</p> <p><small>COPYRIGHT 2016 PATENTED OR PATENTS PENDING</small></p> <p><small>SUPERIOR RECREATIONAL PRODUCTS 1050 COLUMBIA DR. CARROLLTON, GA 30117</small></p>	
<p>A PLAYCORE Company</p>	
SHEET	
2	

BASEPLATE NOTES:

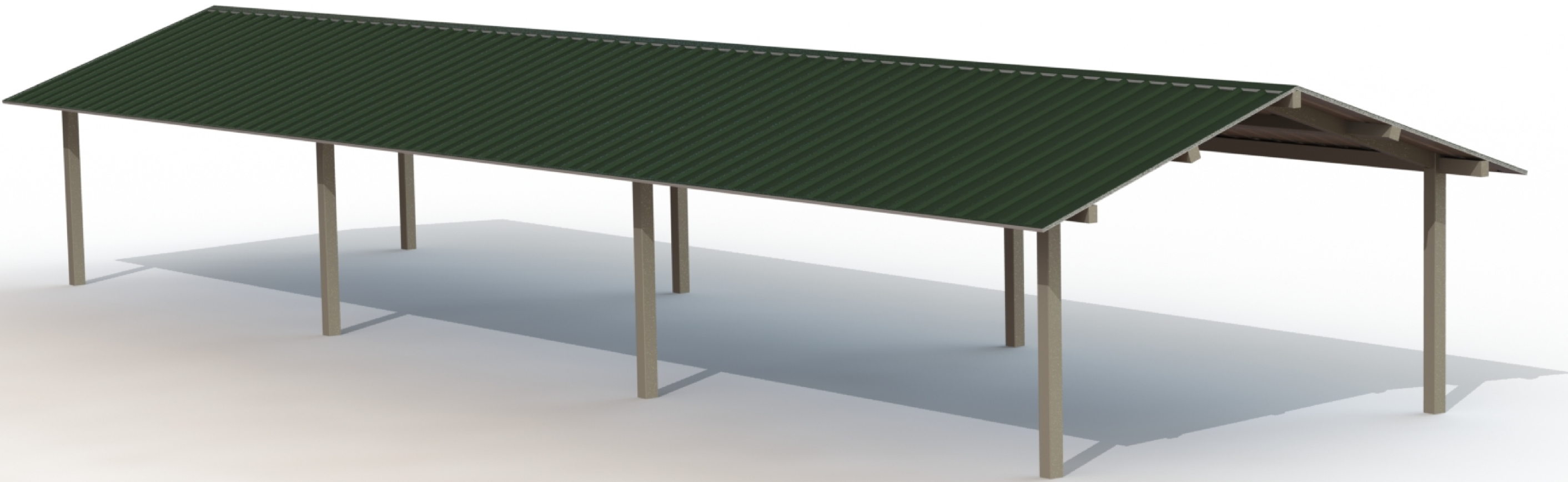
1. SRP ENGINEERING WILL DETERMINE REQUIRED BASEPLATE DESIGN AFTER ENGINEERING PACKAGE IS ORDERED.
2. CUSTOMER MAY SUGGEST PREFERRED BASEPLATE DESIGN.



STOP!!
NOT FOR CONSTRUCTION

**USE FOR PRELIMINARY
PLANNING AND ESTIMATING
ONLY**

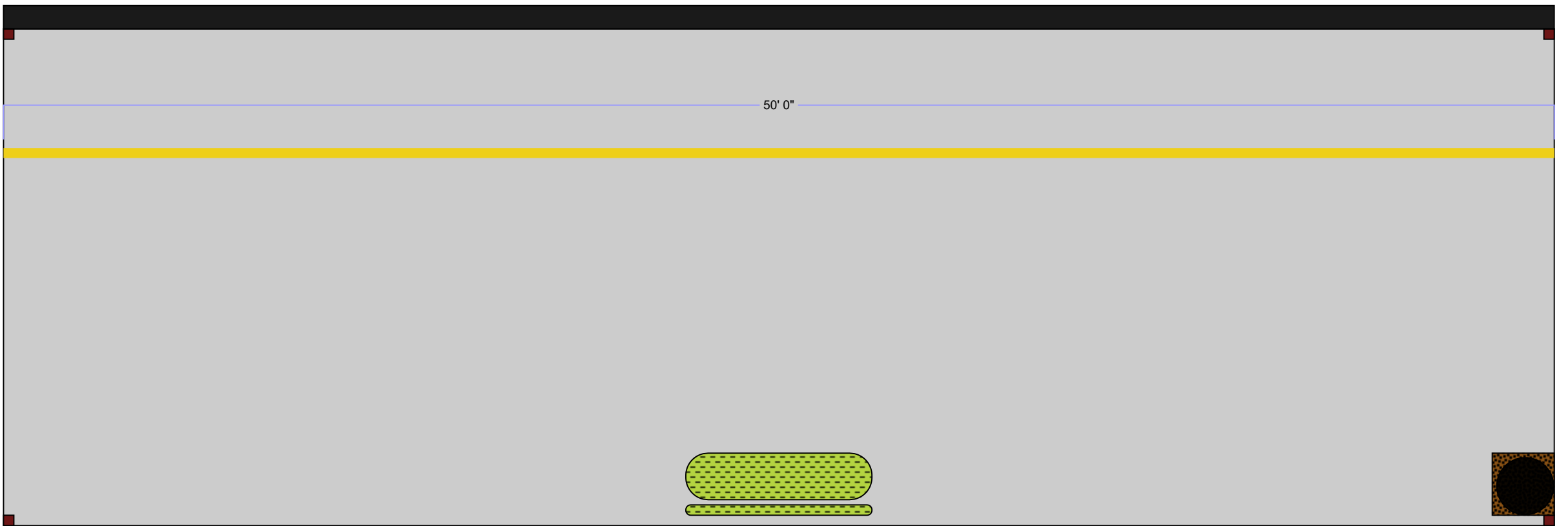
DRAWING: COLUMN LAYOUT		REV LEVEL: A
SCALE: NTS		
SUPERIOR RECREATIONAL PRODUCTS COPYRIGHT 2016 PATENTED OR PATENTS PENDING SUPERIOR RECREATIONAL PRODUCTS 1050 COLUMBIA DR. CARROLLTON, GA 30117		(866)341-4364 www.srpshelter.com A PLAYCORE Company
		SHEET 3



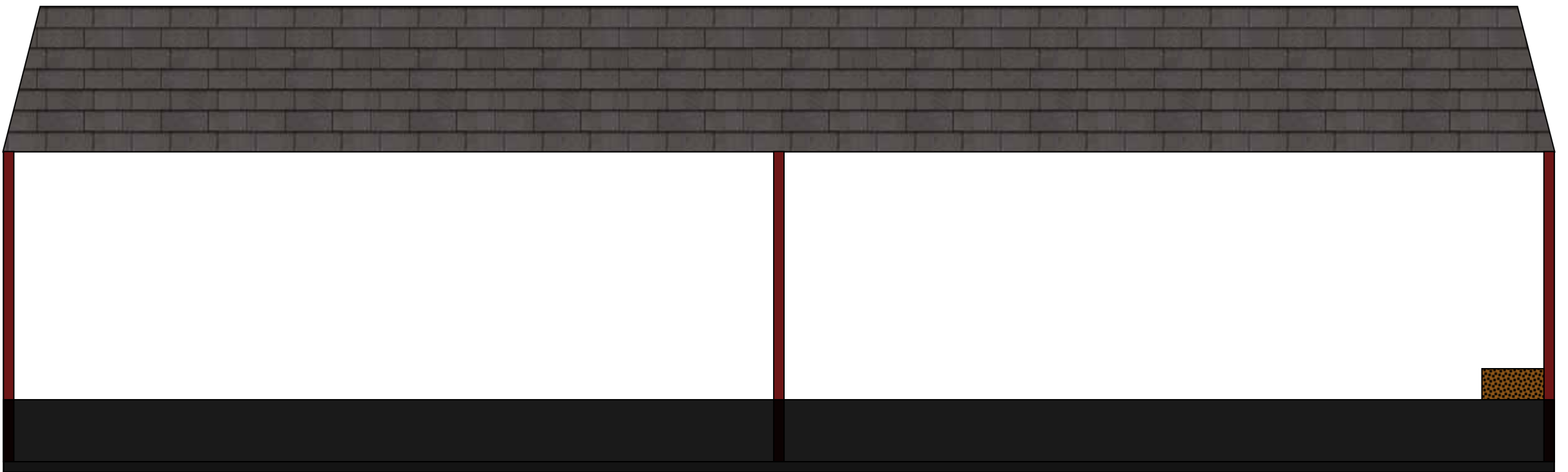
FRAME COLOR: ICED COFFEE
ROOF COLOR: EVERGREEN
COLORS SHOWN ARE FOR REFERENCE ONLY.
CONTACT ShadeAndShelter@SIBrands.com
TO REQUEST ACTUAL COLOR SAMPLES.

GE2064-AS

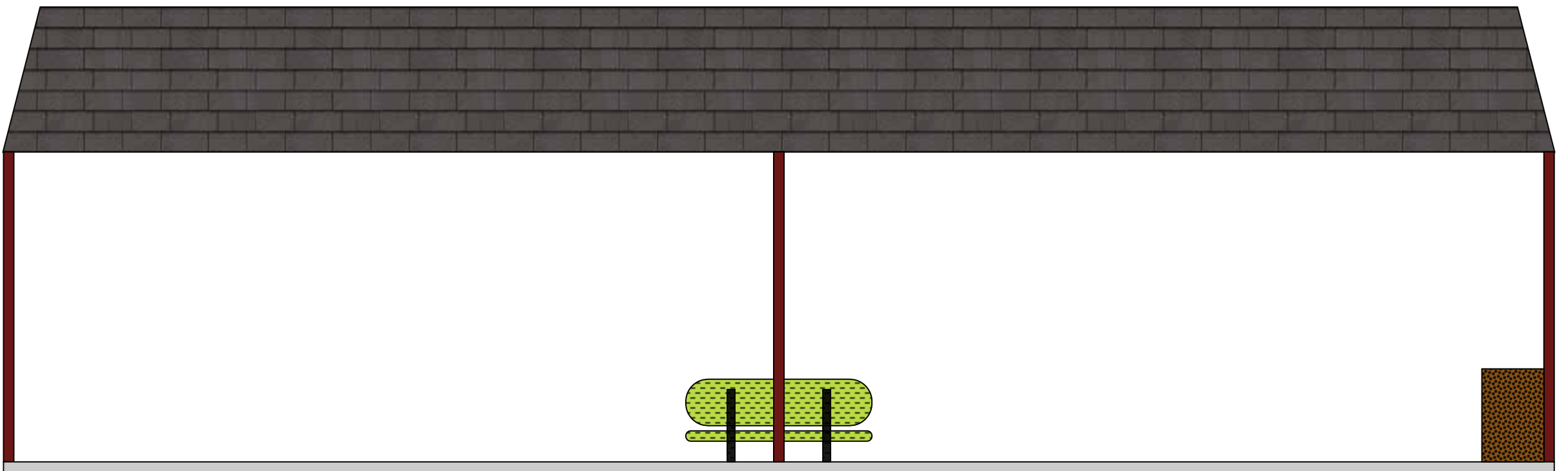
PLINKING RANGE



FOOTPRINT



FRONT VIEW



REAR VIEW

**CONVERSE COUNTY
SHOOTING RANGE
IMPROVEMENTS PROJECT**

**SECURITY
SPECIFICATIONS**



(4/4) New Q1808-LE Camera

(1/3) New M3126-LVE Camera

Pole 1

(2/4) New Q1808-LE Camera

Cat6

(1/4) New Q1808-LE Camera

(3/4) New Q1808-LE Camera

Starlink

Additional Proposed Pole 2

Fiber

(3/3) New Q1808-LE 150mm Camera

(3/3) New M3126-LVE Camera

Pole 3

Google

100 ft



(2/3) New Q1808-LE 150mm Camera

(1/3) New Q1808-LE 150mm Camera

(2/3) New M3126-LVE Camera

P2P

Pole 4

Google

50 ft

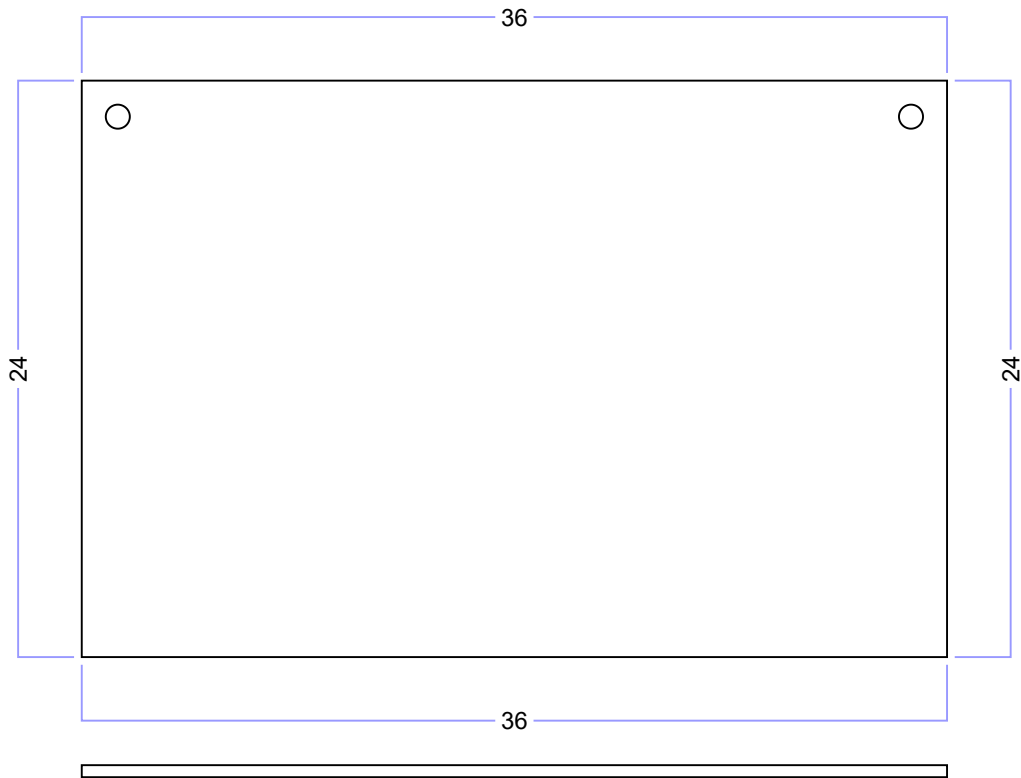
Imagery ©2025 Airbus, Maxar Technologies Report a map error

**CONVERSE COUNTY
SHOOTING RANGE
IMPROVEMENTS PROJECT**

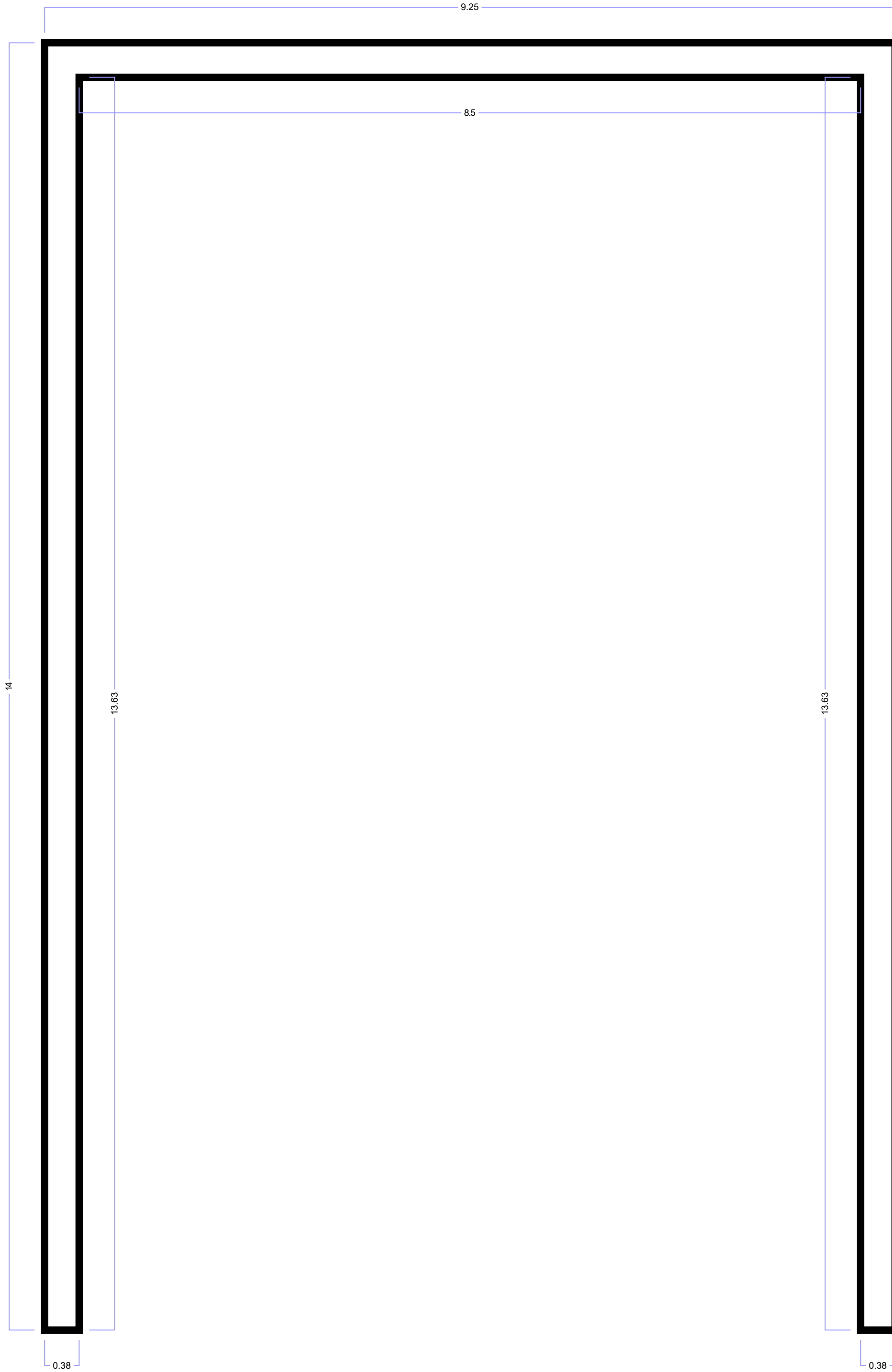
**600 YARD RANGE
GONG
SPECIFICATIONS**

AR 500 target

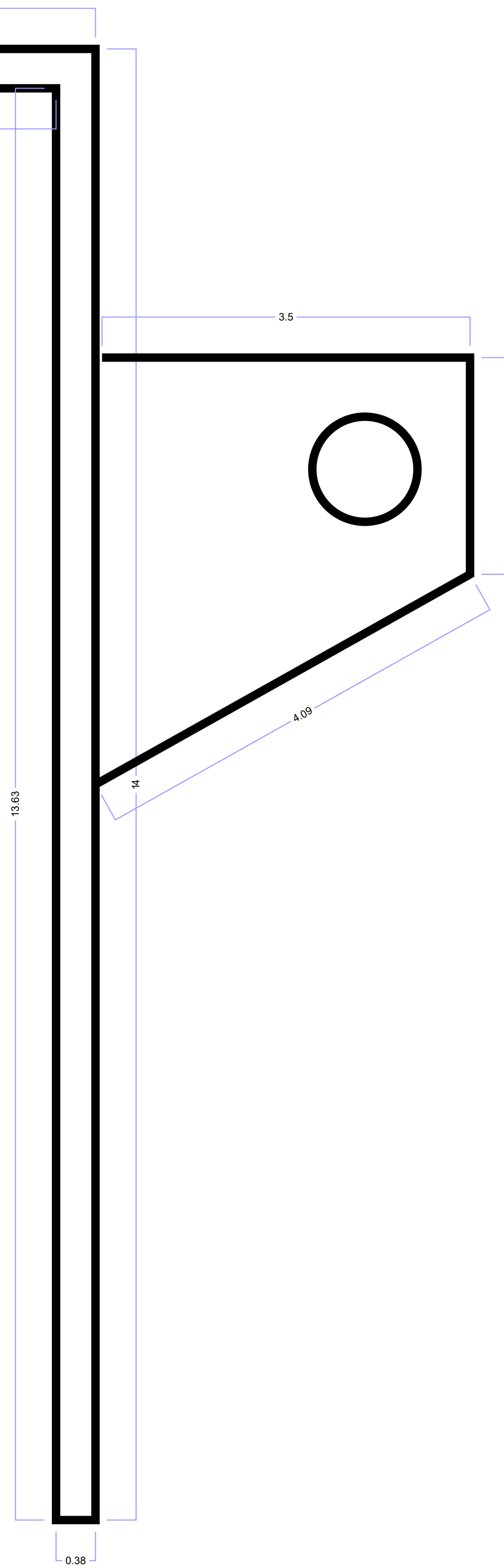
GONG TARGET



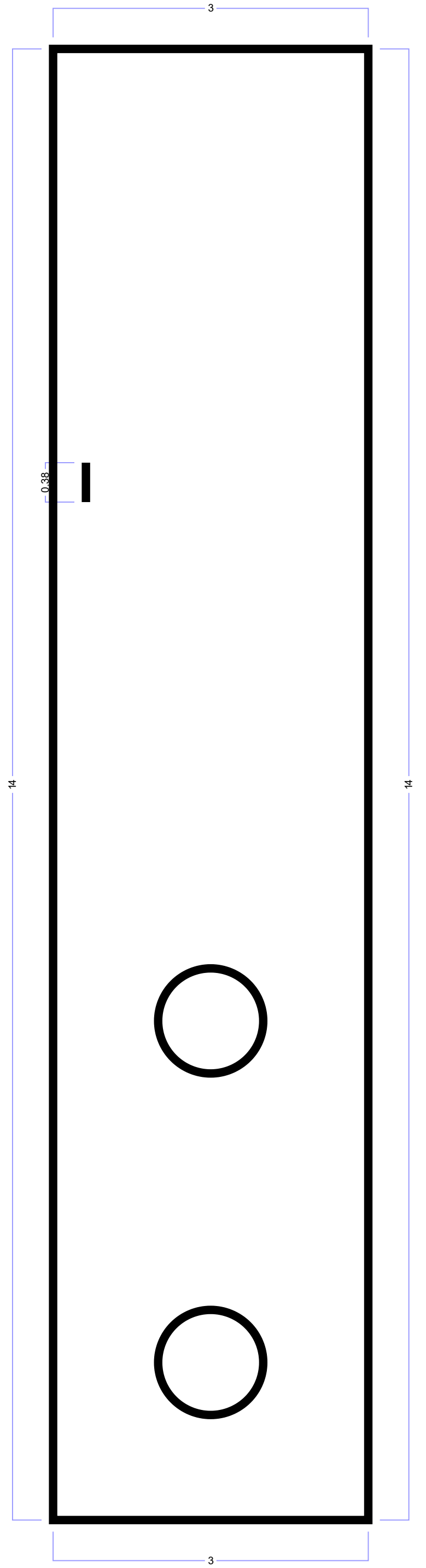
SIDE VIEW



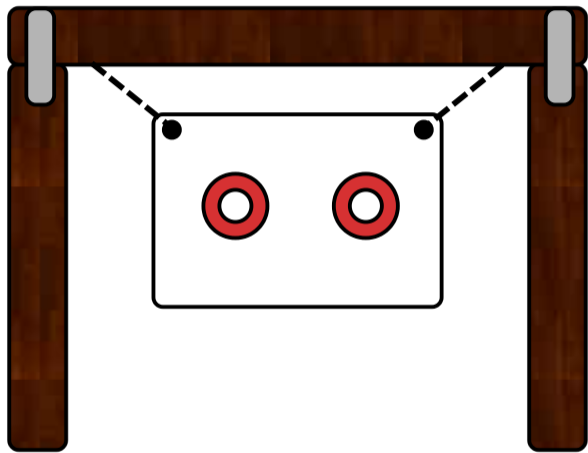
TARGET BRACKETS



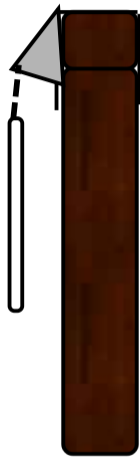
FRONT VIEW



FRONT



SIDE



600-YARD TARGETS

